

Parts List

In this chapter...

- Serial Number Format
- Using the Parts List
- Parts List Index
- Part Lists
- Duplex Unit
- 500-Sheet Tray Option
- Xerox Supplies and Accessories

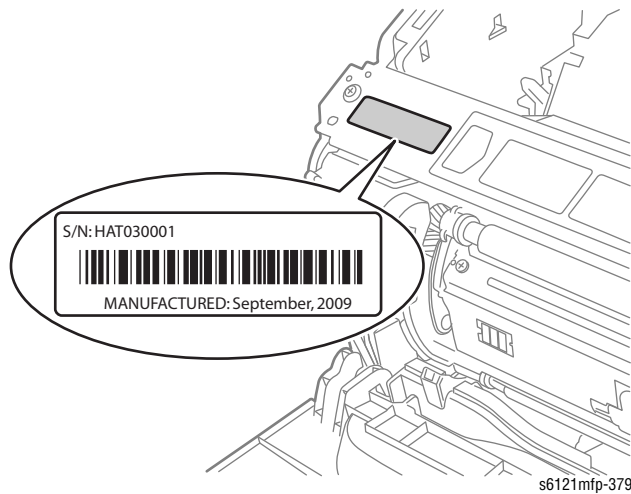
Chapter 9

Serial Number Format

Changes to Xerox products are made to accommodate improved components as they become available. It is important when ordering parts to include the following information:

- Component's part number
- Product type or model number
- Serial Number of the printer

The serial number is found on a label located on the left-side of the front cross member. Open the Front Cover to locate the Serial Number.



The nine-digit serial number uses the format **PPRSSSSS**.

- **PPP** = Three digit alphanumeric product code

Product Code	Product
UAT	6121MFP, 110 V Engine
UAU	6121MFPV, 220 V Engine

- **R** = Single digit numeric revision digit, 0-9. This is changed when the ending serial number is reached or when a major product change occurs.
- **SSSSS** = Five digit numeric serial number based on the following table. The serial numbers are reset only when the ending number is reached or when the revision number is rolled.

Product	Starting Serial Number	Ending Serial Number
6121MFP_S, 110V Engine	10001	30000
6121MFP_N, 110V Engine	30001	99999
6121MFPV_S, 220V Engine	10001	30000
6121MFPV_N, 220V Engine	30001	99999

Example

UAT253072: Xerox Serial Number

UAT: Product Code for the Phaser 6121MFP, 110V printer

2 = Revision Level

53072 = Serial Number for 6121 N

Part Lists

Using the Parts List

- **ID No.:** The callout number from the exploded part diagram.
- **Name/Description:** The name of the part order and the number of parts supplied per order.
- **Part Number:** The material part number used to order that specific part.
- Parts identified throughout this manual are referenced **PL#.#.#**; For example, PL3.1.10 means the part is item 10 of Parts List 3.1.
- A black triangle preceding a number followed by a parenthetical statement in an illustrated parts list means the item is a parent assembly, made up of the individual parts called out in parentheses.
- The notation “**with X~Y**” following a part name indicates an assembly that is made up of components X through Y. For example, “1 (with 2~4)” means part 1 consists of part 2, part 3, and part 4.
- An asterisk (*) following a part name indicates the page contains a note about this part.
- The notation (NS) next to a part indicates that particular part is not spared, but contained in a kit or major assembly.
- The notation “**J1<>J2 and P2**” is attached to a wire harness. It indicates that connector Jack 1 is attached to one end of the wire harness and connector J2 is attached to the other end that is plugged into P2.

Note

Only parts showing part numbers are available for ordering by support. Parts not showing part numbers are available on the parent assembly.

Abbreviations

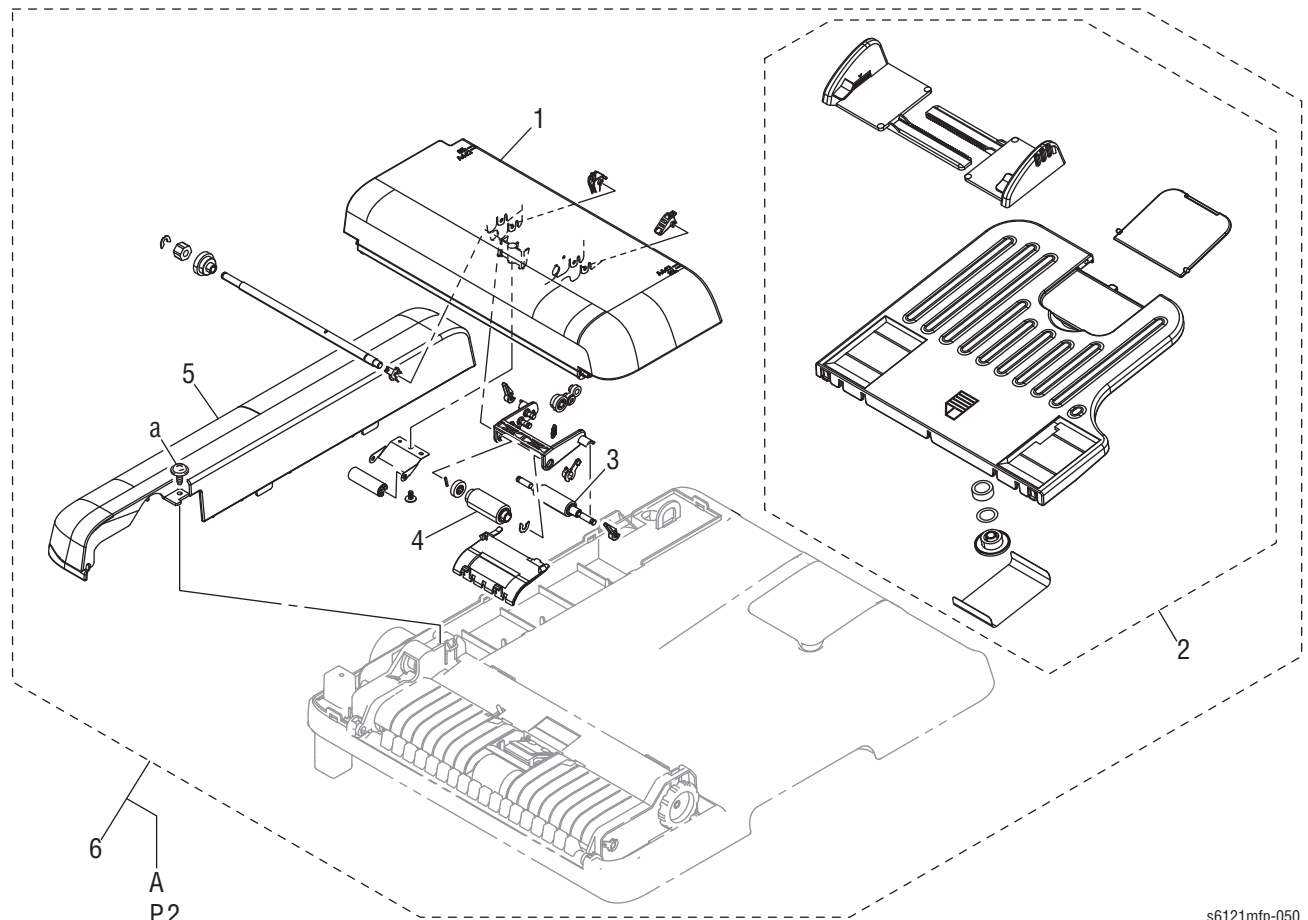
Abbreviation	Meaning
C	C-ring
E	E-ring
KL	K-clip
S	Screw

Parts List Index

Number	Title	Page #
PL 1.0	Automatic Document Feeder	9-6
PL 2.0	Scanner	9-10
PL 3.0	External Parts	9-12
PL 4.0	Main Frame	9-14
PL 5.0	Rack/Rack Drive	9-16
PL 6.0	Paper Take-up Section	9-20
PL 7.0	Transfer Section	9-22
PL 8.0	Paper Exit Section	9-26
PL 9.0	Drive	9-28
PL 10.0	Right Guide	9-32
PL 11.0	Fuser	9-34
PL 12.0	Cooling	9-36
PL 13.0	Electrical Components	9-38
PL 14.0	Duplex Unit	9-40
PL 15.0	500-Sheet Tray	9-48

Part List 1.1 Automatic Document Feeder (1/2)

ADF Unit



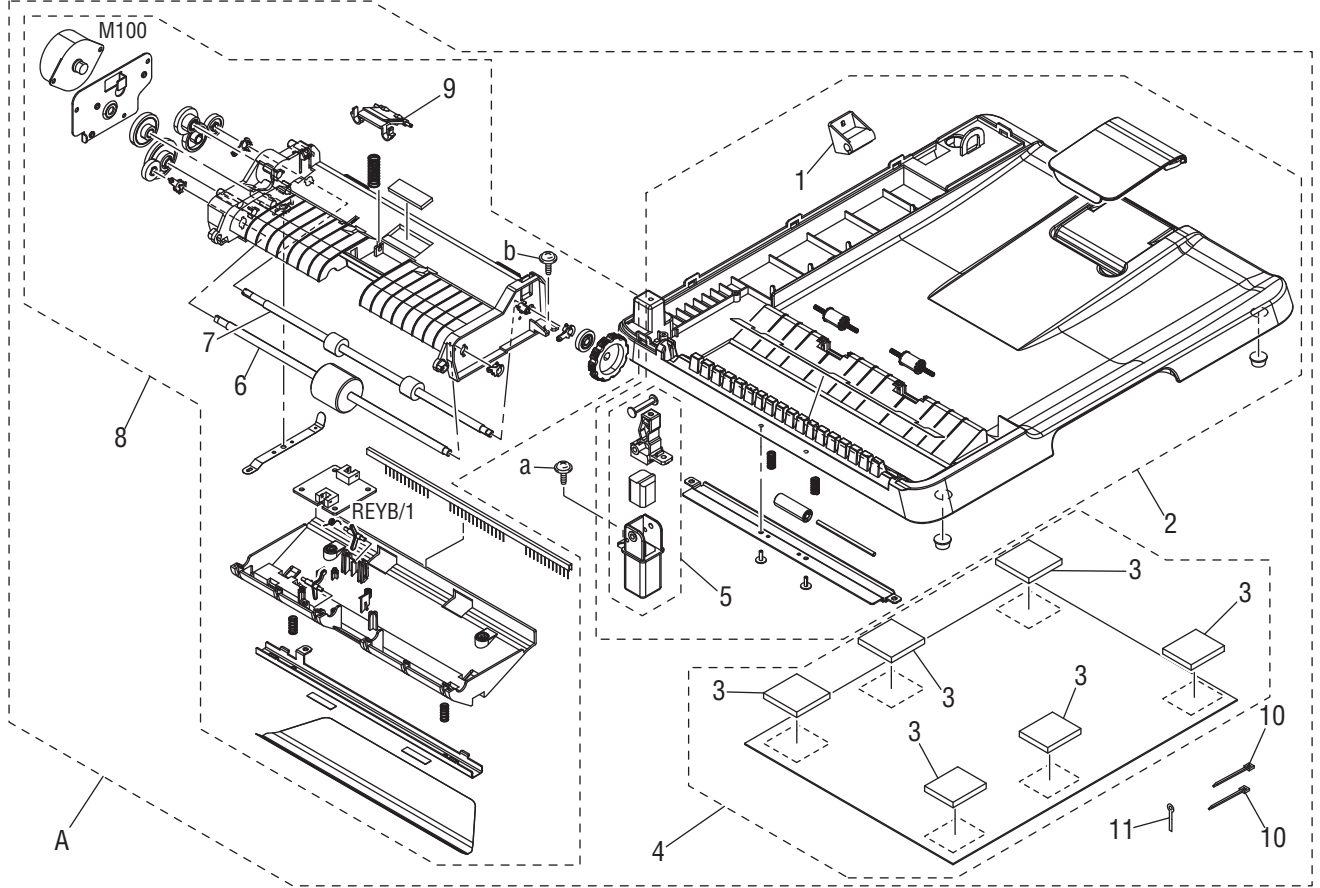
s6121mfp-050

Part List 1.1 Automatic Document Feeder (1/2)

Item	Part Name	Part Number
1	Top Cover	848E56890
2	Tray Assembly	—
3	Pick-up Roller	059E11000
4	Feed Roller	059E10990
5	Rear Cover	—
6	ADF Unit	017E17020

Part List 1.2 Automatic Document Feeder (2/2)

ADF Unit



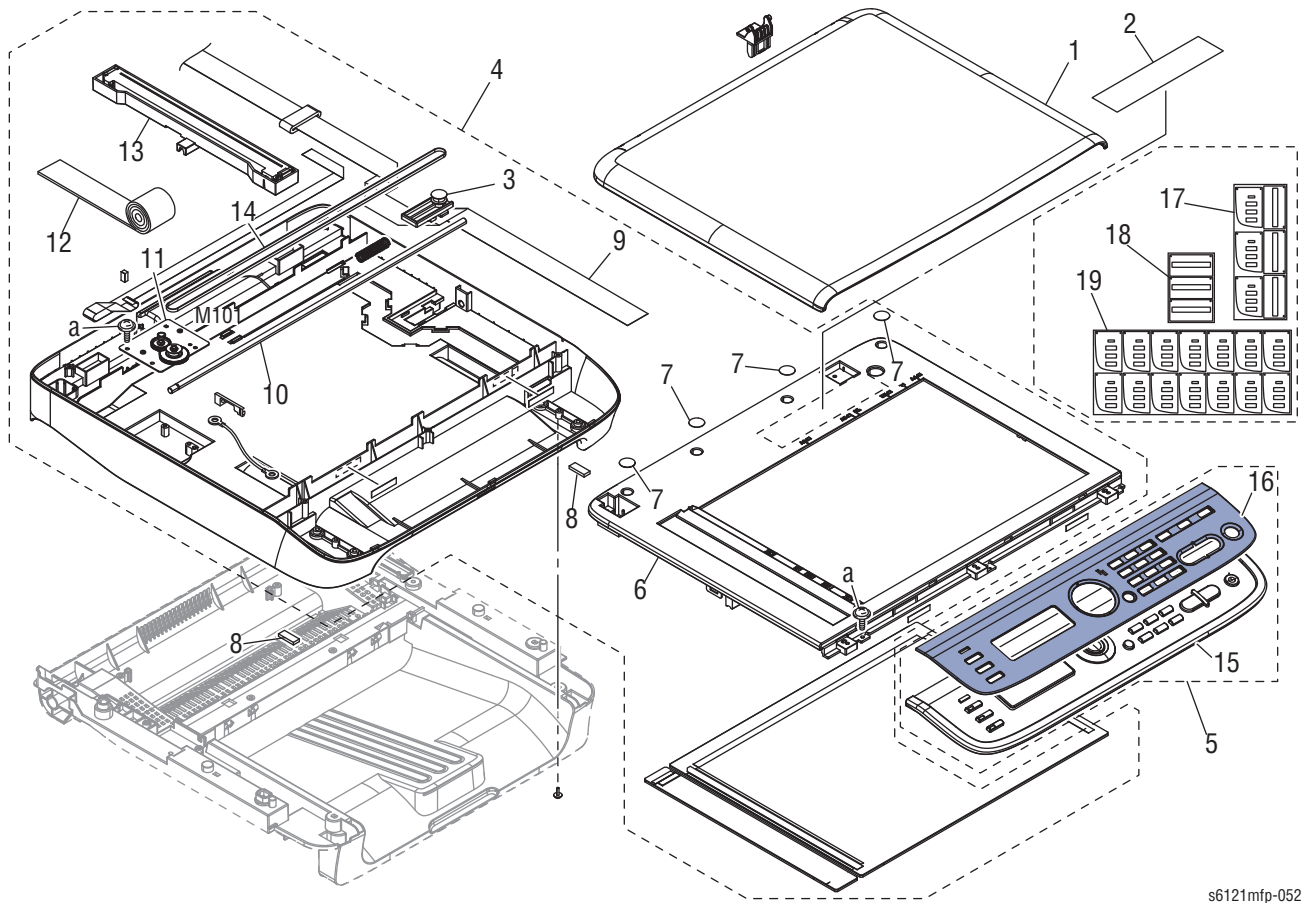
s6121mfp-051

Part List 1.2 Automatic Document Feeder

Item	Part Name	Part Number
1	Hinge	—
2	Cover Assembly	—
3	Sponge	—
4	Pad	—
5	Hinge	—
6	Roller	—
7	Roller	—
8	Paper Take-Up Assembly	—
9	Pick Pad Assembly	019E81950
10	Cable Tie	—
11	Clamp	—

Part List 2.0 Scanner

IR Section

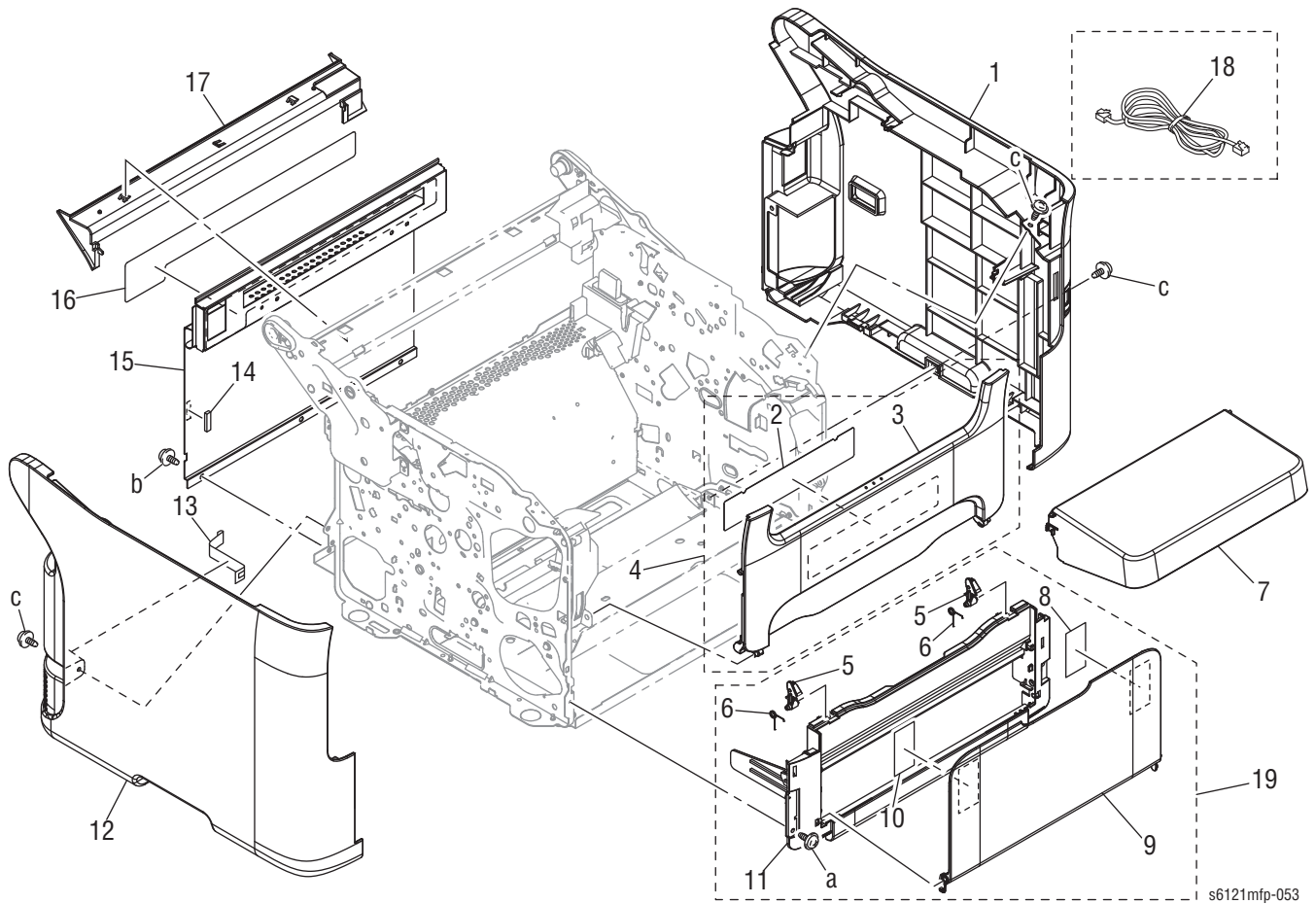


s6121mfp-052

Part List 2.0 Scanner

Item	Part Name	Part Number
1	Cover (Original) XC	—
2	Label Copy Prohibition	—
3	Pulley Assembly	—
4	Scanner Unit 4in1	109K02310
	Scanner Unit 3in1	109K02320
5	Control Panel (3in1) Assembly	848K42910
	Control Panel (4in1) Assembly	848K42920
6	Cover Assembly XC	—
	Cover Assembly XC	—
7	Sheet XC	—
8	Vibration Proof Part	—
9	Flat Cable	—
10	Shaft	—
11	Driving Assembly	—
12	Tape	—
13	CIS Assembly	—
14	Timing Belt	—
15	Control Panel (3in1)	—
	Control Panel (4in1)	—
16	4-in-1 Bezel	056E05460
	3-in-1 Bezel	056E05470
17	Phaser 6121MFP/N Bezel, 110V (4-in-1)	897E31830
18	Phaser 6121MFP/S Bezel, 110V (3-in-1)	897E31880
19	Phaser 6121MFP/N Bezel, 220V (4-in-1)	—

Part List 3.0 External Parts

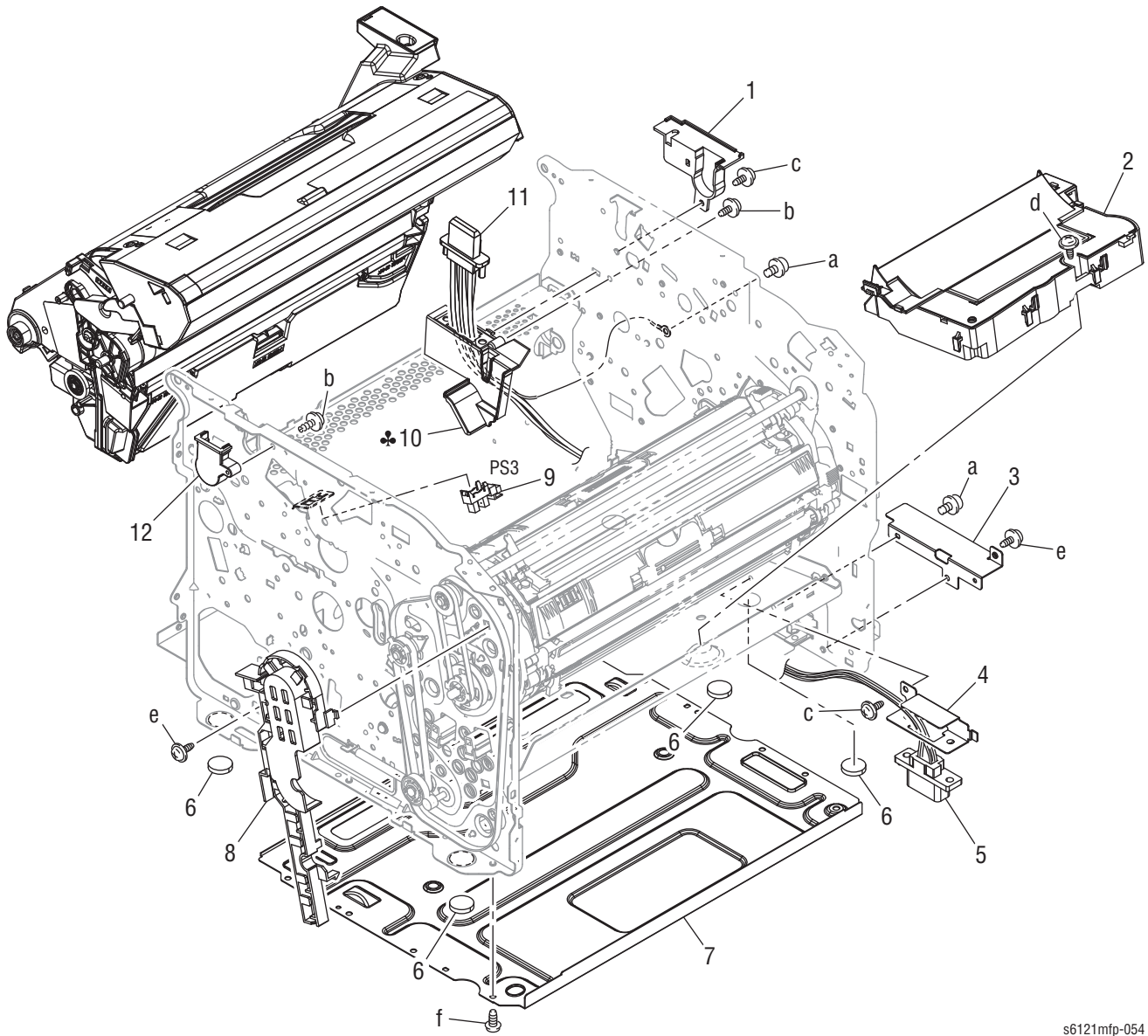


Part List 3.0 External Parts

Item	Part Name	Part Number
a	Screw ¹ (silver, tap, 8 mm)	826E54950
b	Screw ¹ (silver, tap, 6 mm)	826E54970
c	Screw ¹ (metal, tap, 10 mm)	826E54980
1	Right Cover	848E56900
2	Sheet	—
3	Cover	—
4	Cover F Upper Assembly	—
5	Lever ¹	011E25460
6	Torsion Coil spring ¹	809E95490
7	Tray Cover	848E56940
8	Label	—
9	Tray	—
10	Label	—
11	Cover, Front	—
12	Left Cover	848E56930
13	Conductive Tape	—
14	Gasket	—
15	Cover Rear (Phaser 6121MFP/S)	—
	Cover Rear (Phaser 6121MFP/N/D)	—
16	Seal	—
17	Cover Rear	—
18	Wire Harness Assembly	—
19	Cover F Lower Assembly	848E56920

1. Included in Hardware Kit, see page 9-54.

Part List 4.0 Main Frame Section



s6121mfp-054

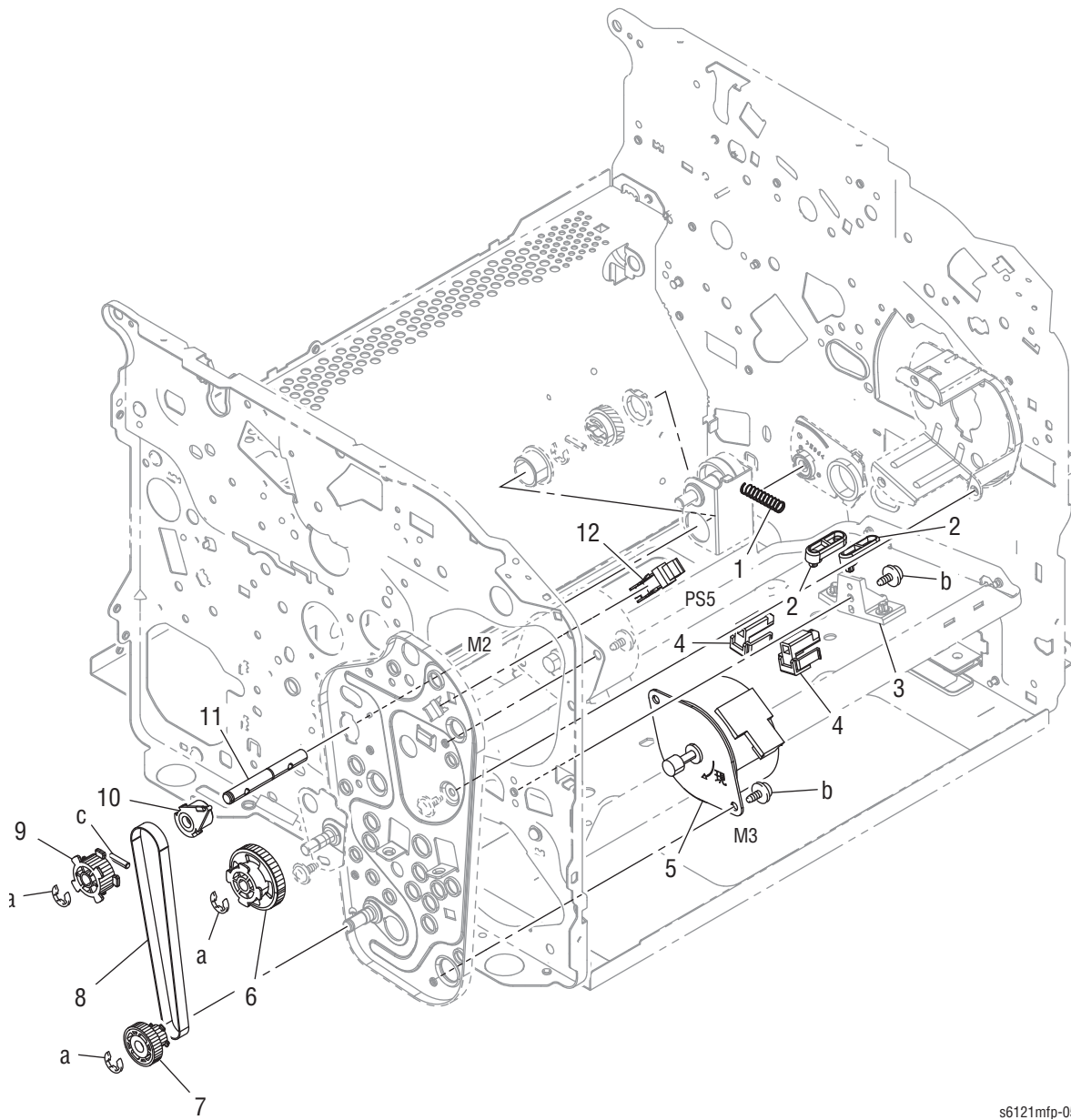
Part List 4.0 Main Frame Section

Item	Part Name	Part Number
a	Screw ¹	826E54960
c	Screw ¹	826E54970
e	Screw ¹	826E54980
1	Cover	—
2	Laser Unit	033K04760
3	Mounting Plate	—
4	Mounting Plate	—
5	Wiring ²	—
6	Rubber Foot	—
7	Frame /Lower	—
8	Guide	—
9	2nd Image Transfer Retraction Sensor (PS3) ¹	130E18330
10	Holder	—
	Holder	—
11	Wiring ²	—
12	Cover	—
13	Imaging Unit	108R00868

1. Included in Hardware Kit, see page 9-54.

2. Included in Wiring Kit, see page 9-55.

Part List 5.1 Rack/Rack Drive Section (1/2)



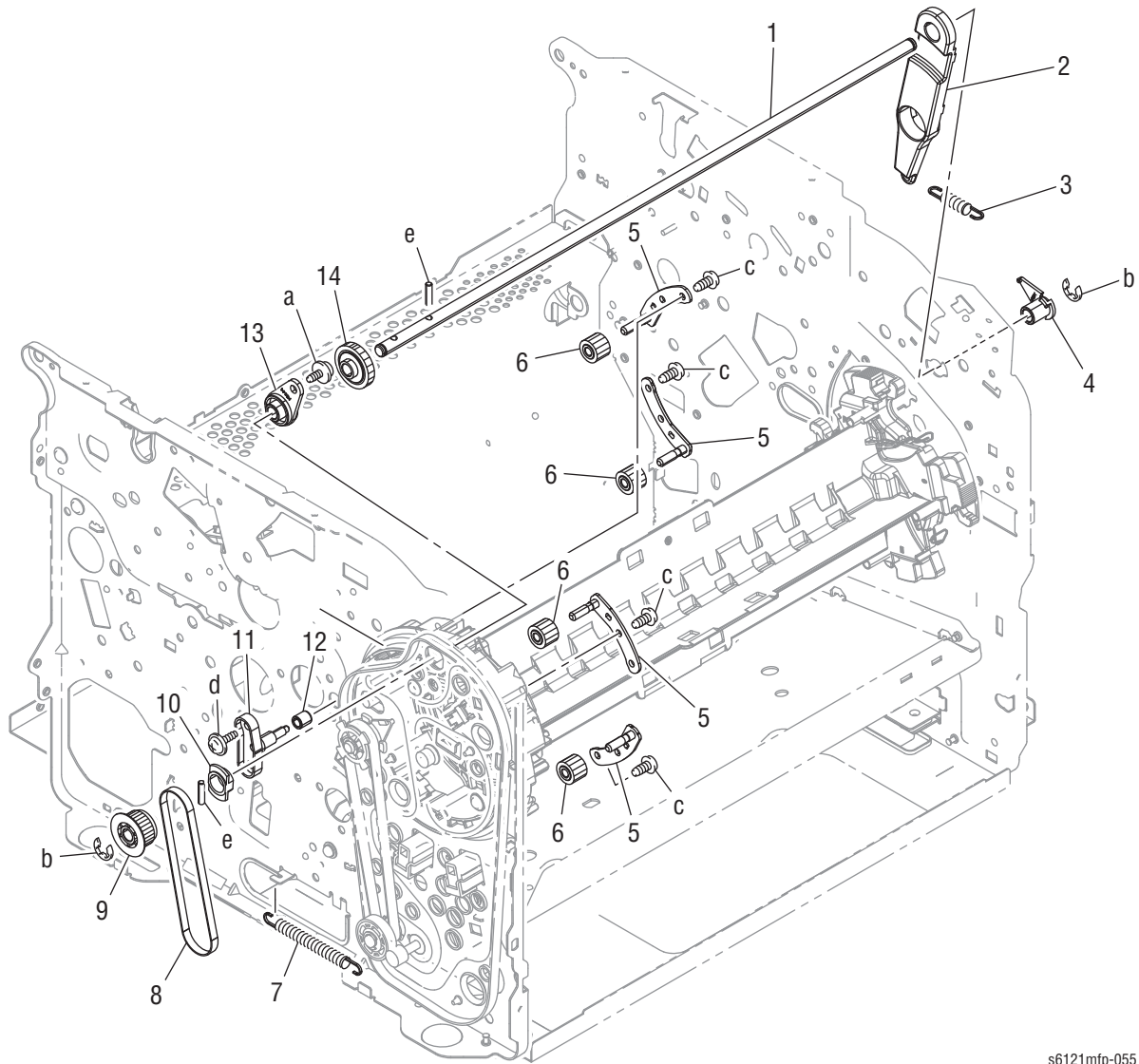
s6121mfp-056

Part List 5.1 Rack/Rack Drive Section (1/2)

Item	Part Name	Part Number
b	Screw ¹	826E54980
c	Pin ¹	115E13100
1	Torsion Coil spring	—
2	Guide ¹	032E40590
3	Guide	—
4	Spacer ¹	014E68450
5	Developing Motor	127E16780
6	Gear 63T	—
7	Gear 40/18T	—
8	Timing belt 250L ¹	023E31780
9	Pulley 30T	—
10	Bushing	—
11	Shaft	—
12	Rack Position Sensor ¹	130E18330

1. Included in Hardware Kit, see page 9-54.

Part List 5.1 Rack/Rack Drive Section (2/2)



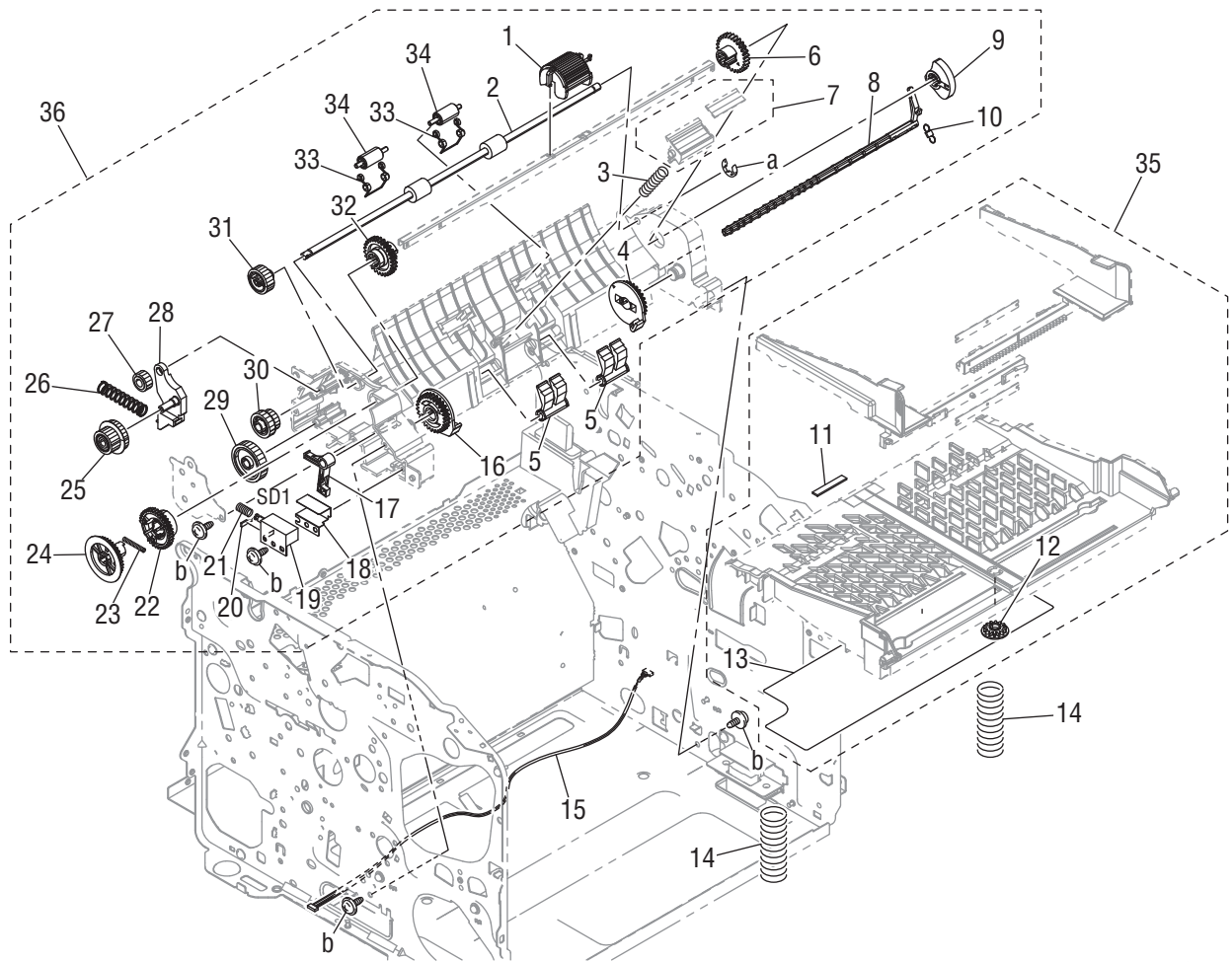
s6121mfp-055

Part List 5.1 Rack/Rack Drive Section (2/2)

Item	Part Name	Part Number
a	Cup-head Tapping Screw SC tight 10 mm ¹	826E54980
b	E-ring ¹	115E13090
e	Pin ¹	115E13100
1	Shaft	—
2	Hold Part /HK	—
3	Pulling Coil Spring ¹	809E95500
4	Bushing ¹	013E42740
5	Fixing Plate Assembly	—
6	Gear 13T	—
7	Pulling Coil Spring ¹	809E95510
8	Timing Belt 192L ¹	023E31770
9	Pulley 28T	—
10	Bushing	—
11	Mounting Guide	—
12	Roll ¹	059E11010
13	Bushing ¹	016E20260
14	Gear 20T	—

1. Included in Hardware Kit, see page 9-54.

Part List 6.0 Paper Take-up Section



s6121mfp-057

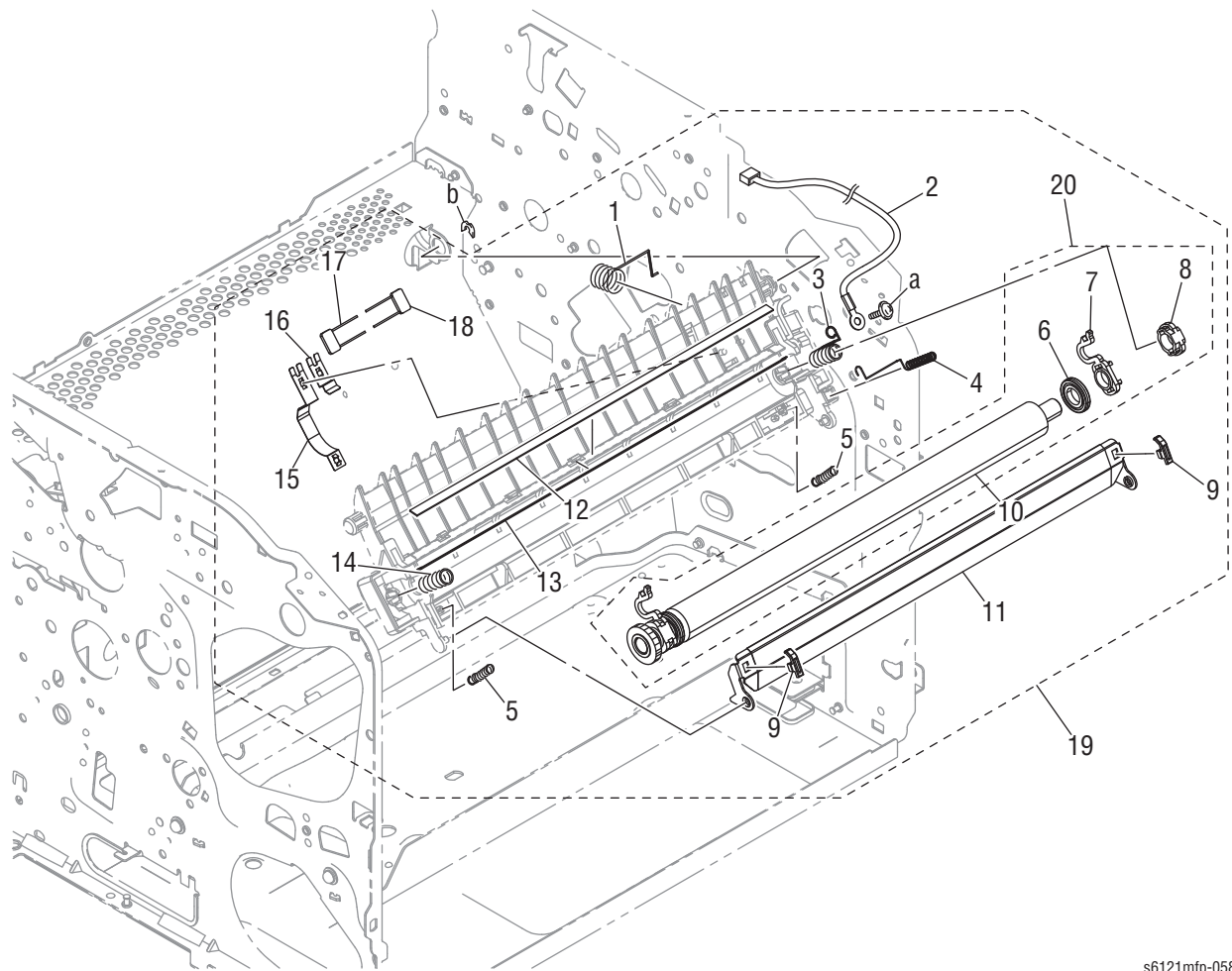
Part List 6.0 Paper Take-up Section

Item	Part Name	Part Number
1	Feed Roller	059E05460
2	Roller	—
3	Pressure Springs	—
4	Cam	—
5	Stopper	—
6	Gear 27T	—
7	Separation Pad	019E81920
8	Lever	—
9	Cam	—
10	Pulling Coil spring	—
11	Friction Sheet	—
12	Gear 14T	—
13	Seal	—
14	Compressing Spring ¹	809E95520
15	Wiring ² (see “Wiring Kit” on page 9-55)	—
16	Cam	—
17	Lever	—
18	Protection Part	—
19	Tray 1 Paperfeed Solenoid (SD1)	604K61490
20	Seal	—
21	Compressing Spring	—
22	Gear 36T	—
23	Compressing Spring	—
24	Gear 36T	—
25	Gear 26/20T	—
26	Compressing Coil Spring	—
27	Gear 15T	—
28	Lever	—
29	Gear 27T	—
30	Gear 17/17T	—
31	Gear 22T	—
32	Gear 27T	—
33	Conveyance Spring	—
34	Conveyance Roll	—
35	Lifting Plate Assembly	815K12690
36	Feed Assembly	059K70800

1. Included in Hardware Kit, see page 9-54.

2. Included in Wiring Kit, see page 9-55.

Part List 7.1 Transfer Section (1/2)

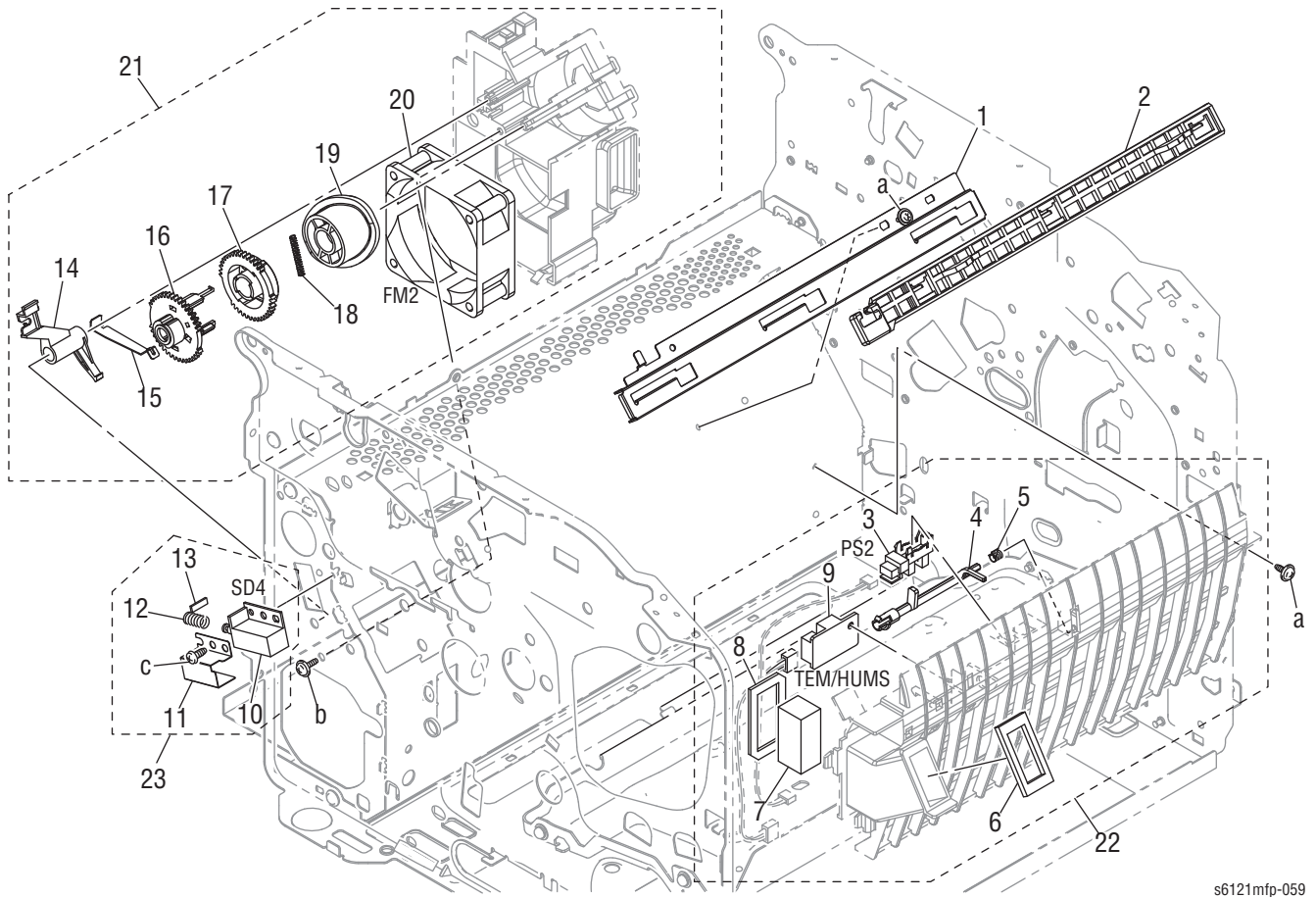


s6121mfp-058

Part List 7.1 Transfer Section

Item	Part Name	Part Number
1	Contact	—
2	Wiring	—
3	Contact	—
4	Contact	—
5	Pressure Spring	—
6	Roll	—
7	Holder	—
8	Bushing	—
9	Spacer	—
10	Transfer Roller	—
11	Guide Plate	—
12	Neutralizing Member	—
13	Contact	—
14	Contact	—
15	Contact	—
16	Contact	—
17	Resistor	—
18	Fixed Power Resistors	—
19	2nd Transfer Assembly	—
20	Transfer Roller Assembly	604K61470

Part List 7.2 Transfer Section (2/2)



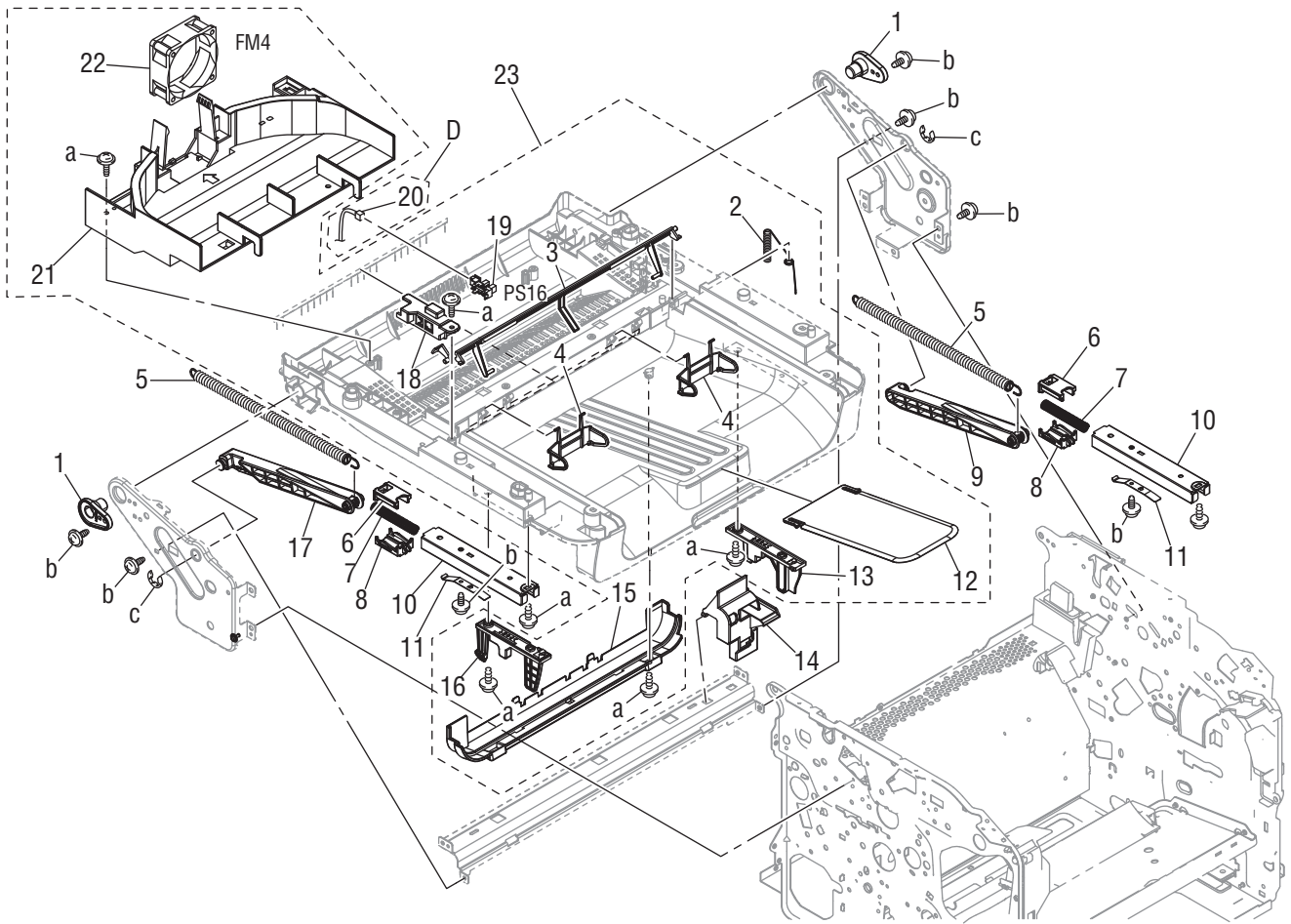
s6121mfp-059

Part List 7.2 Transfer Section

Item	Part Name	Part Number
1	Mounting Plate	—
2	Slide Plate	—
3	Registration Sensor ¹	130E18330
4	Actuator	—
5	Torsion Coil Spring	—
6	Seal /Front	—
7	Filter	—
8	Seal /Rear	—
9	Humidity Sensor	130E18300
10	2nd Image Transfer Solenoid	See #23
11	Protection Part	—
12	Compressing Spring	—
13	Seal	—
14	Lever	—
15	Plate Spring	—
16	Gear 42T	—
17	Gear 42T	—
18	Compressing Spring	—
19	Cam	—
20	Ventilation Fan Motor	127E16790
21	Guide Assembly, Fan Duct	032K09830
22	Guide Assembly, Paper Path	032K09840
23	2nd Image Transfer Solenoid Assembly	604K61490

1. Included in Hardware Kit, see page 9-54.

Part List 8.0 Paper Exit Section



s6121mfp-060

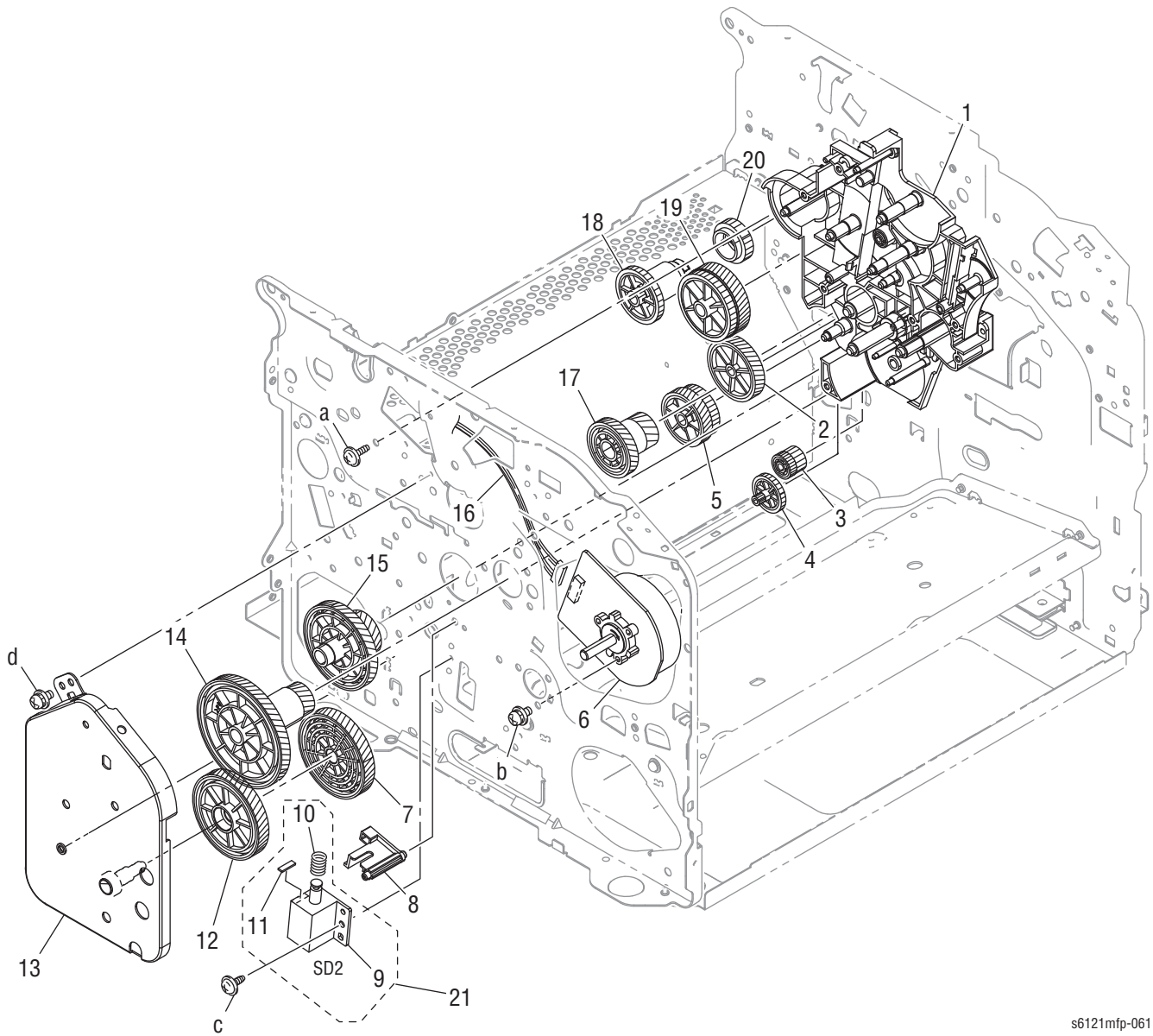
Part List 8.0 Paper Exit Section

Item	Part Name	Part Number
b	Screw ¹	826E54980
c	E-ring ¹	115E13110
1	Bushing /Right ¹	016E20270
2	Ground Spring	—
3	Actuator	—
4	Holding Guide	—
5	Pulling Coil spring	—
6	Holder	—
7	Compressing Coil Spring	—
8	Holder	—
9	Balancer /Right	—
10	Rail	—
11	Plate Spring	—
12	Paper Exit Tray	—
13	Lever /Right	—
14	Guide	—
15	Cover	—
16	Lever /Left	—
17	Balancer /Right	—
18	Cover	—
19	Media Full Sensor ²	130E18330
20	Wiring ² (see “Wiring Kit” on page 9-55)	—
21	Duct	—
22	Exit Tray Cooling Fan	—
23	Upper Cover	—

1. Included in Hardware Kit, see page 9-54.

2. Include in Wiring Kit, see page 9-55.

Part List 9.1 Drive Section (1/2)



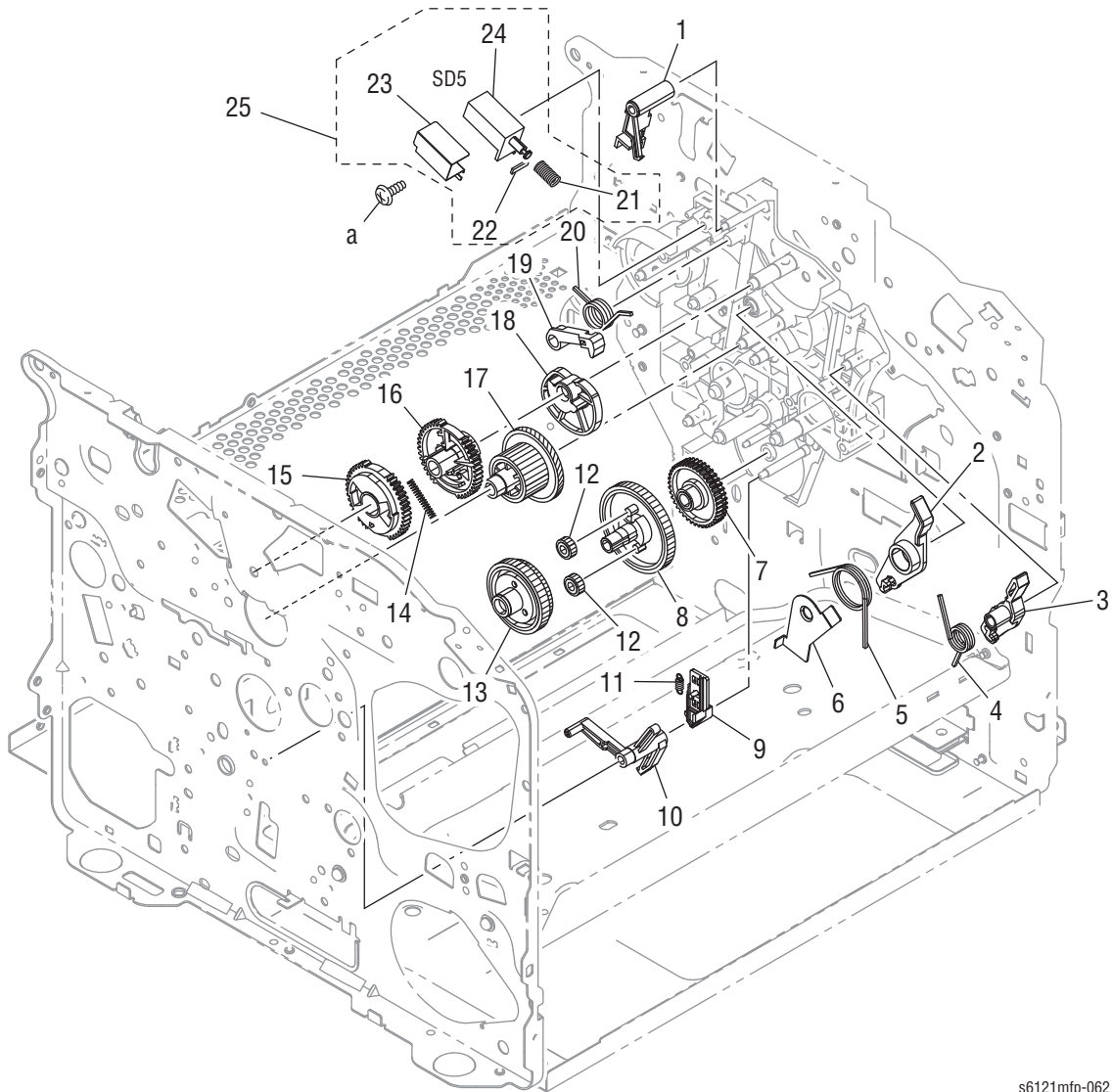
s6121mfp-061

Part List 9.1 Drive Section (1/2)

Item	Part Name	Part Number
1	Holder	—
2	Gear 40T	—
3	Gear 15/26T	—
4	Gear 13/25T	—
5	Gear 34/35T	—
6	Main Motor	127E16800
7	Gear 91T	—
8	Lever	—
9	Registration Roller Solenoid	—
10	Compressing Coil spring	—
11	Seal	—
12	Gear 91T	—
13	Mounting Plate Assembly	—
14	Gear 20/117T	—
15	Gear 28/91T	—
16	Wiring ¹	—
17	Gear 36/20T	—
18	Gear 30T	—
19	Gear 37/45T	—
20	Gear 21T	—
21	Registration Roller Solenoid Assembly	604K61480

1. Include in Wiring Kit, see page 9-55.

Part List 9.2 Drive Section (2/2)

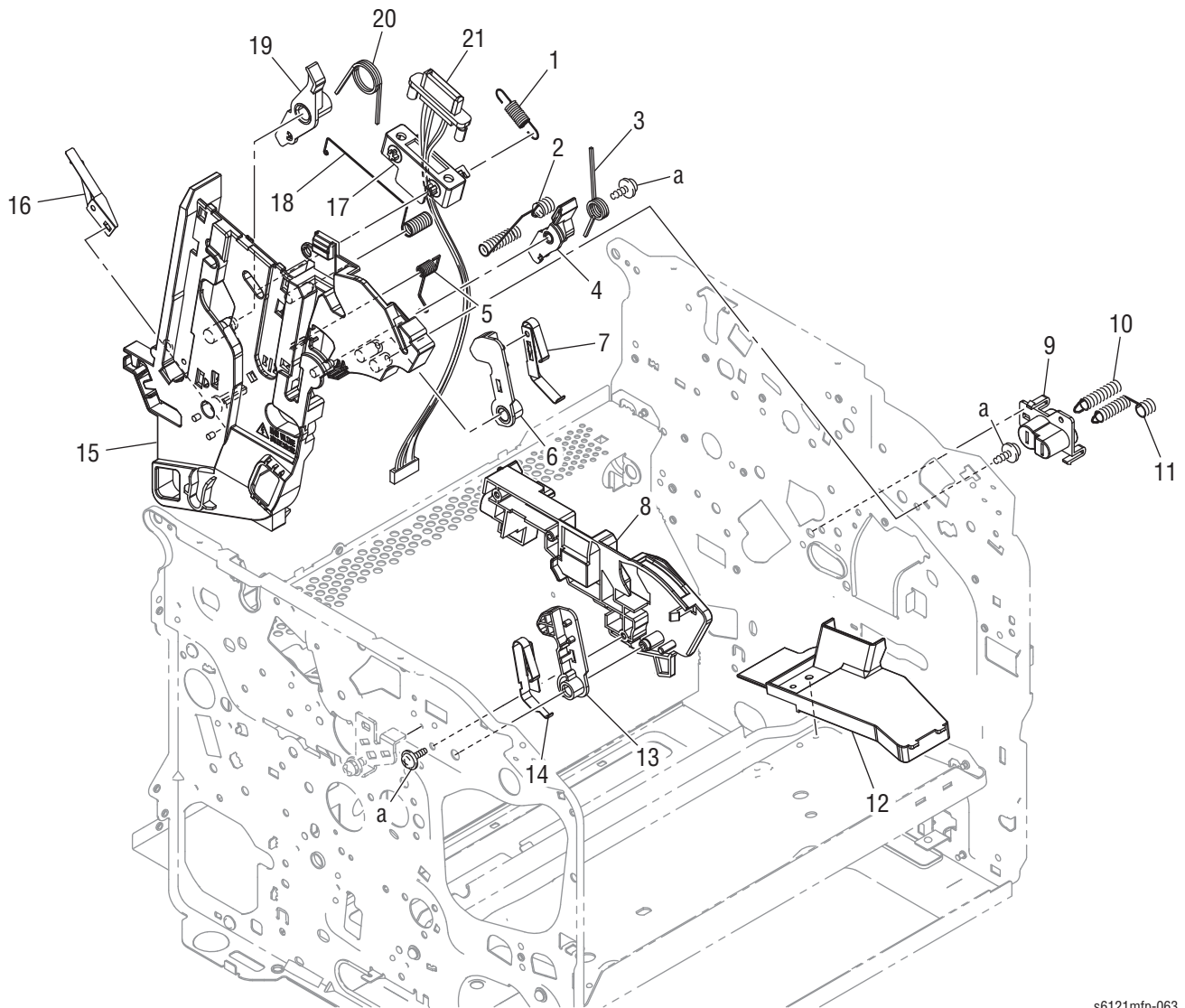


s6121mfp-062

Part List 9.2 Drive Section (2/2)

Item	Part Name	Part Number
1	Lever	—
2	Lever	—
3	Lever	—
4	Torsion Coil Spring /Left	—
5	Torsion Coil Spring	—
6	Mounting Plate	—
7	Ratchet	—
8	Gear 52T	—
9	Lever	—
10	Lever	—
11	Pulling Spring	—
12	Gear 17T	—
13	Gear 54/42T	—
14	Compressing Spring	—
15	Gear 45T	—
16	Gear 45T	—
17	Gear 27/40T	—
18	Cam	—
19	Lever	—
20	Torsion Coil Spring	—
21	Compressing Spring	—
22	Seal	—
23	Protection Part	—
24	Cleaning Blade Solenoid	—
25	Cleaning Blade Solenoid Assembly	604K61490

Part List 10.0 Right Guide Section



s6121mfp-063

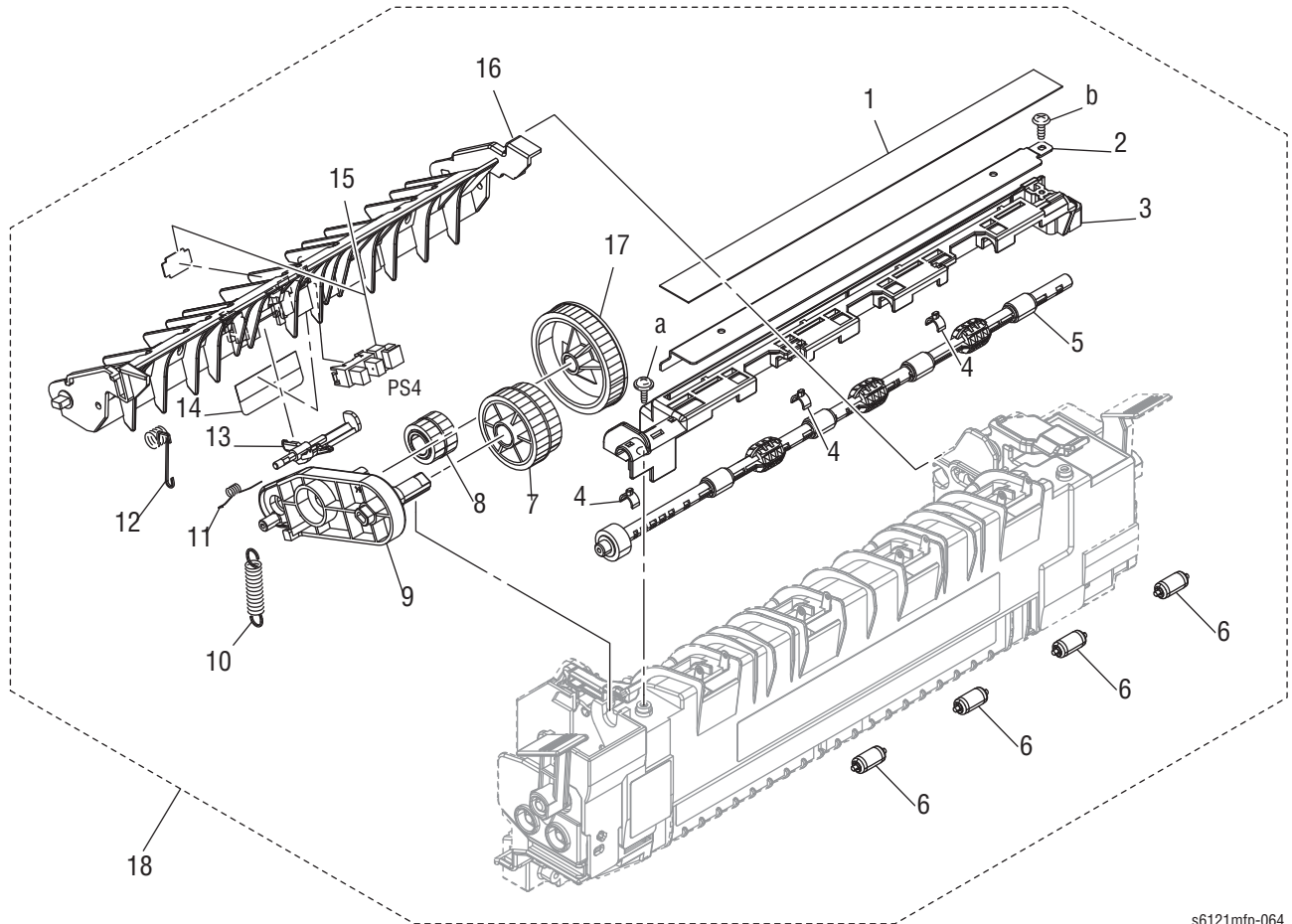
Part List 10.0 Right Guide Section

Item	Part Name	Part Number
1	Pulling Coil Spring	809E95470
2	Contact	—
3	Torsion Coil spring /Right	—
4	Lever	—
5	Contact	—
6	Fixing Lever /Right	—
7	Plate Spring /Right	—
8	Guide /Left	—
9	Holder	—
10	Contact ¹	115E13120
11	Contact	—
12	Guide	—
13	Fixing Lever /Left	—
14	Spring	—
15	Guide /Right	—
16	Spring	—
17	Mounting Plate	—
18	Contact	—
19	Lever	—
20	Torsion Coil Spring	—
21	Wiring ²	—

1. Included in Hardware Kit, see page 9-54.

2. Included in Wiring Kit, see page 9-55.

Part List 11.0 Fuser

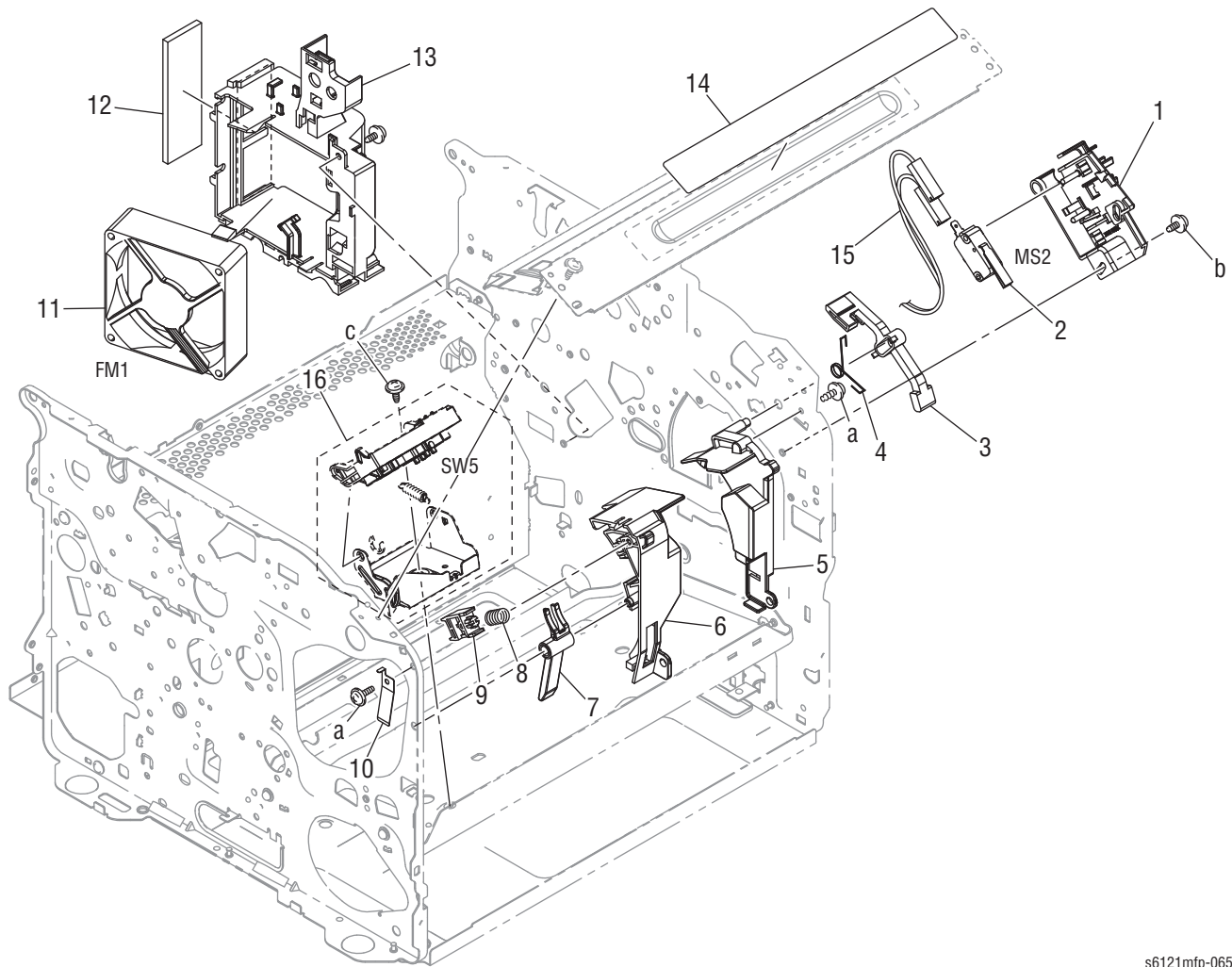


s6121mfo-064

Part List 11.0 Fuser Section

Item	Part Name	Part Number
1	Seal	—
2	Reinforce Plate	—
3	Holder	—
4	Bushing	—
5	Paper Exit Roller	—
6	Roll	—
7	Gear 32/29T	—
8	Gear 16/16T	—
9	Lever	—
10	Pulling Coil spring	—
11	Spring	—
12	Torsion Coil spring	—
13	Actuator	—
14	Seal	—
15	Exit Sensor	—
16	Guide Part	—
17	Gear 44T	—
18	Fuser, 110V	126E02770
	Fuser, 220V	126E02780

Part List 12.0 Cooling Section



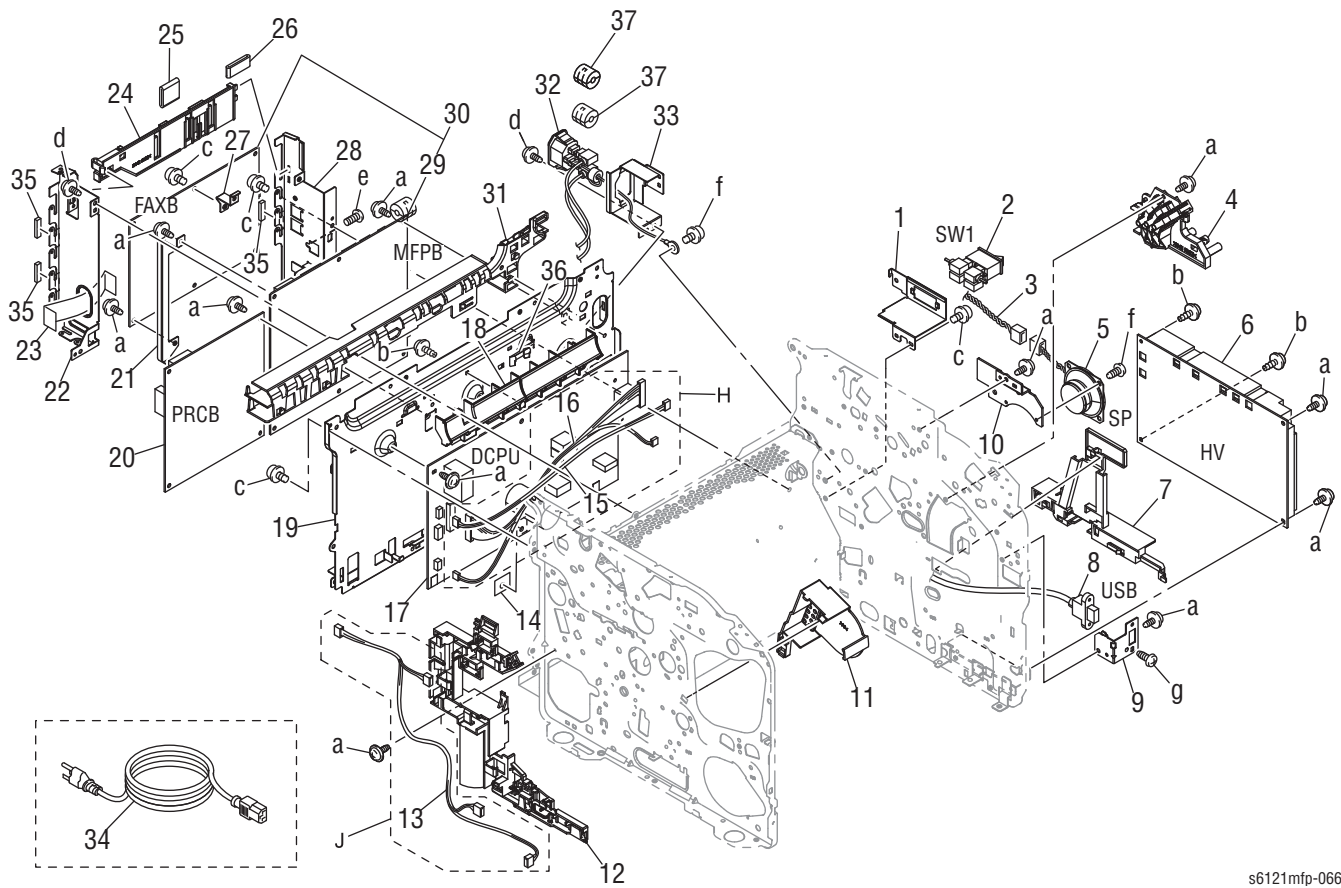
s6121mfp-065

Part List 12.0 Cooling Section

Item	Part Name	Part Number
1	Mounting Plate	—
2	Front Door Switch	110E21120
3	Lever	—
4	Torsion Coil Spring	—
5	Guide	—
6	Guide	—
7	Lock Lever	—
8	Compressing Coil Spring	—
9	Lock Claw	—
10	Ground Plate	—
11	Power Supply Fan Motor	127E16810
12	Filter	—
13	Duct	—
14	Label Jam Remove	—
15	Wiring ¹ (see “Wiring Kit” on page 9-55)	—
16	CSIC Contact Assembly	115K02550

1. Included in Wiring Kit, see page 9-55.

Part List 13.0 Electrical Components Section



s6121mfp-066

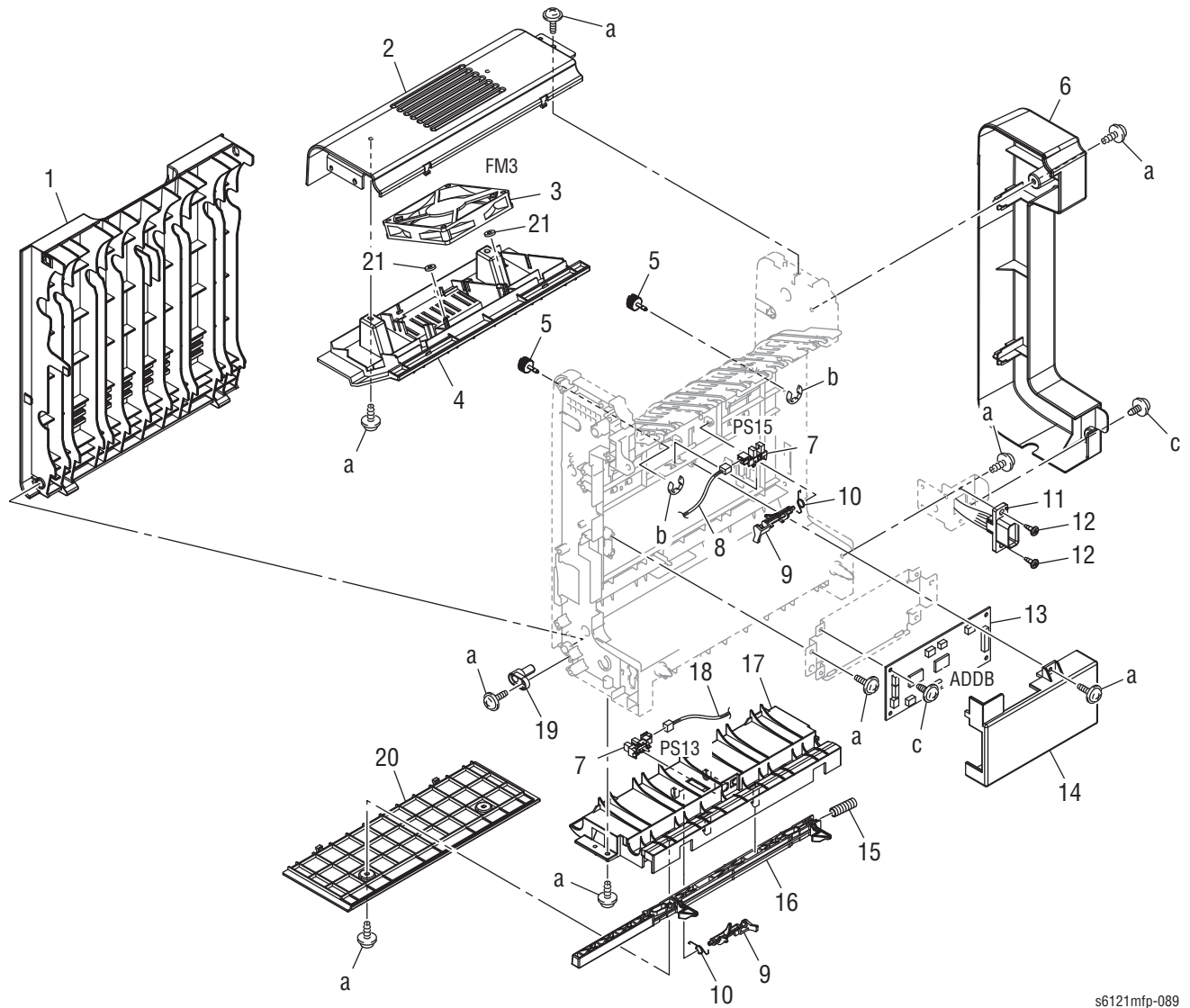
Part List 13.0 Electrical Components Section

Item	Part Name	Part Number
1	Mounting Plate	—
2	Rocker Switch	110E21130
3	Relay Harness	—
4	Rack Contact Assembly	—
5	Speaker	130E18310
6	High Voltage Board	105K36180
7	Guide	—
8	USB Cable	—
9	Mounting Plate	—
10	Mounting Plate	—
11	Cover	—
12	Guide	—
13	Wiring ¹	—
14	Insulating Seal	—
15	Wiring ¹	—
16	Wiring ¹	—
17	110V Power Supply	105E24470
	220V Power Supply	105E24480
18	Duct	—
19	Mounting Plate	—
20	Engine Control Board	960K58870
21	Mounting Plate	—
22	Shield Plate	—
23	Wiring	—
24	Guide	—
25	Ferrite Core	—
26	Ferrite Core	—
27	Mounting Plate	—
28	Mounting Plate	—
	Mounting Plate	—
29	Image/Fax Processor Board (Phaser 6121MFP/N/D) 4-in-1	960K58880
30	Image Processor Board (Phaser 6121MFP/S) 3-in-1	960K58890
31	Guide Plate	—
32	Wiring	—
33	Mounting Plate	—
34	Power Cord	—
	Power Cord	—
35	Gasket	—
36	Duct	—
37	Ferrite Core	—

1. Included in Wiring Kit, see page 9-55.

Duplex Unit

Part List 14.1 Duplex Unit (1/2)

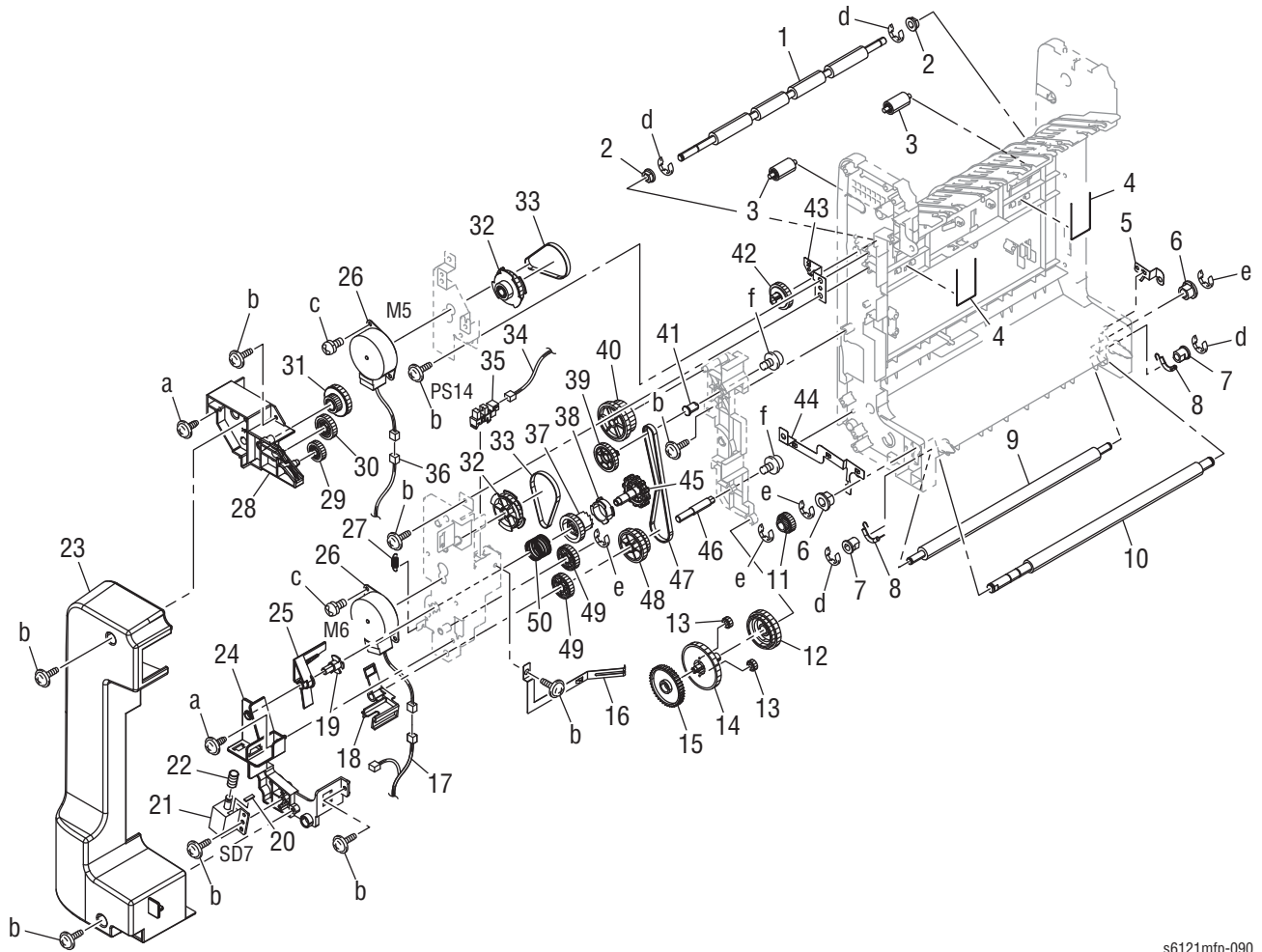


s6121mfp-089

Part List 14.1 Duplex Unit (1/2)

Item	Part Name	Part Number
	Duplex Unit	084K37140
1	Cover	—
2	Cover	—
3	Fan	—
4	Upper Cover	—
5	Screw	—
6	Left Cover	—
7	PS15 - Transport Sensor PS13 - Loop Sensor	130E18330
8	Wire Harness Assembly	—
9	Actuator	—
10	Torsion Spring	—
11	Wire Harness Assembly	—
12	Shoulder Screw	—
13	PWB Assembly(—
14	Cover	—
15	Compressing Spring	—
16	Lever	—
17	Lower Cover	—
18	Wire Harness Assembly	—
19	Guide Part	—
20	Cover	—
21	Cushion	—

Part List 14.2 Duplex Unit (2/2)



s6121mfp-090

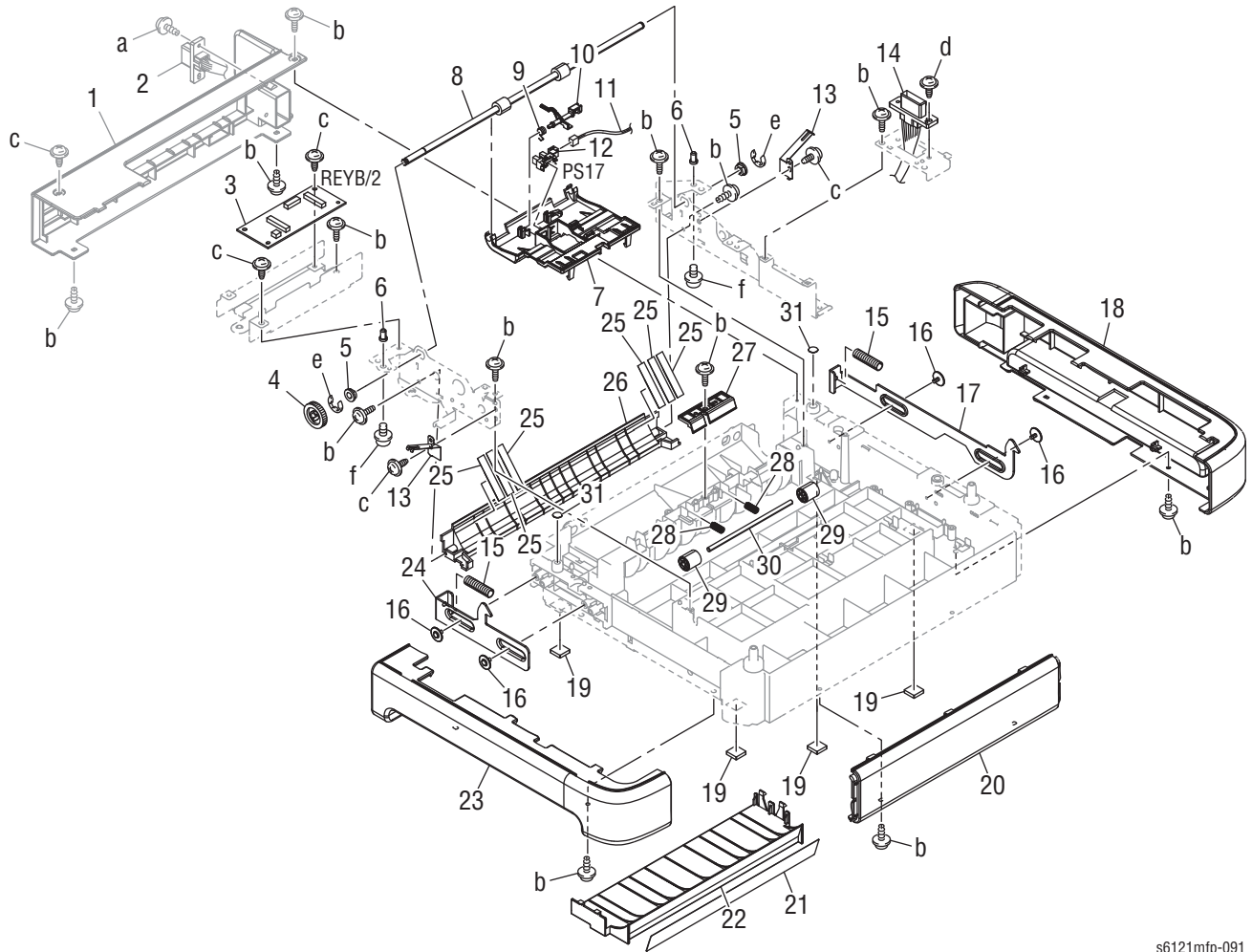
Part List 14.2 Duplex Unit (2/2)

Item	Part Name	Part Number
1	Roller	—
2	Bushing	—
3	Roll	—
4	Spring	—
5	Ground Plate, Right	—
6	Bushing	—
7	Bushing	—
8	Tension Spring	—
9	Roller	—
10	Roller	—
11	Gear 20T	—
12	Gear 54/42T	—
13	Gear 17T	—
14	Gear 52T	—
15	Ratchet	—
16	Ground Spring	—
17	Wire Harness Assembly	—
18	Lever	—
19	Shaft	—
20	Seal	—
21	Conveyance Solenoid	—
22	Compressing Coil Spring	—
23	Right Cover	—
24	Registration Holder	—
25	Lever	—
26	Motor	—
27	Pulling Coil	—
28	Holder	—
29	Gear 16T	—
30	Gear 20T	—
31	Gear14/26T	—
32	Pulley 14T	—
33	Timing Belt 138L	—
34	Wire Harness Assembly	—
35	Photo Interrupter	—
36	Wire Harness Assembly	—
37	Gear 30T	—
38	Pulley	—
39	Gear 20/24T	—

Part List 14.2 Duplex Unit (2/2) (continued)

Item	Part Name	Part Number
40	Gear 28/34T	—
41	Shaft	—
42	Gear 22T	—
43	Ground Plate	—
44	Ground Plate	—
45	Knob	—
46	Shaft	—
47	Timing Belt 254L	—
48	Gear 36/37T	—
49	Gear 26T	—
50	Compressing Coil Spring	—

Part List 14.3 Duplex Base Unit



s6121mfp-091

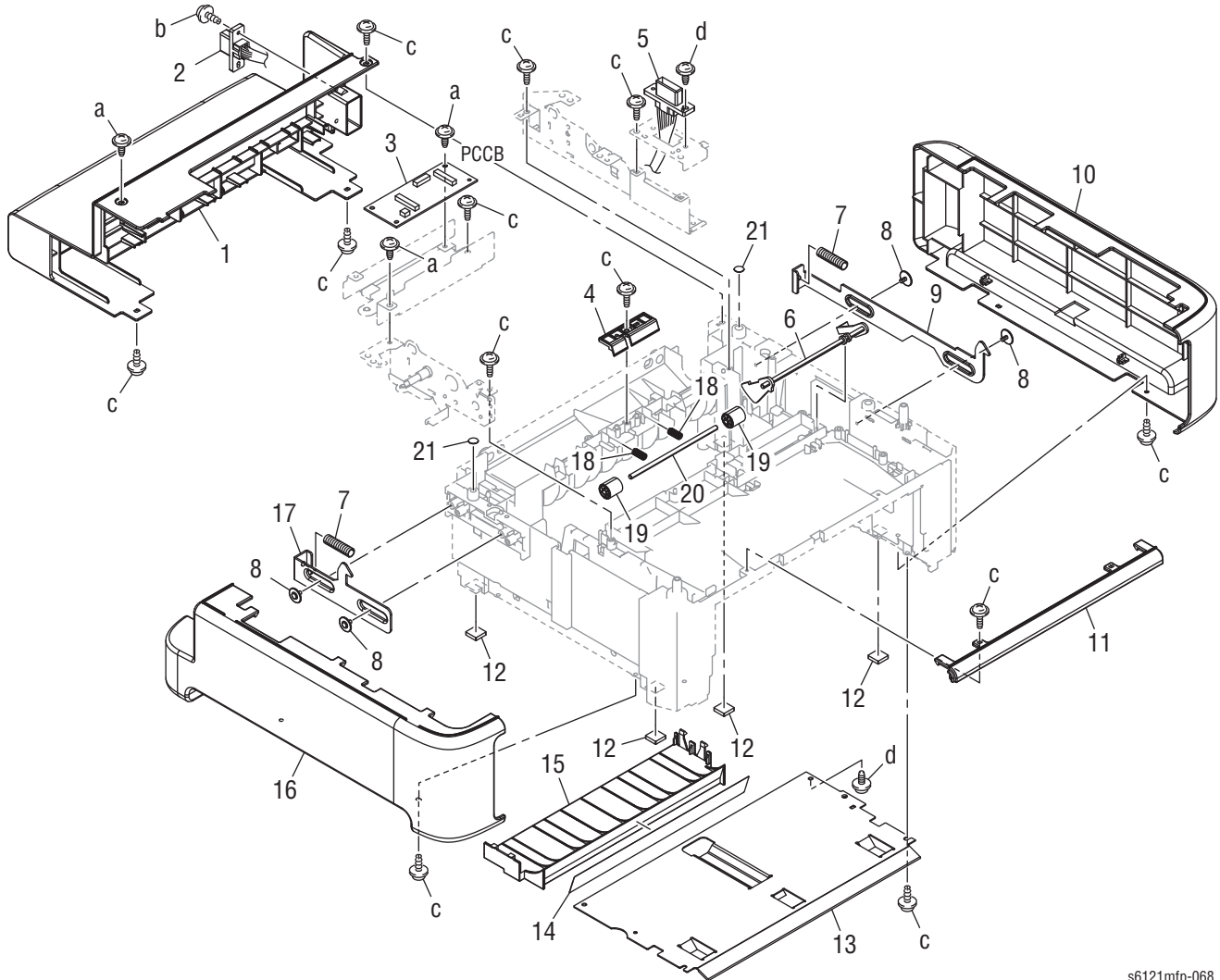
Part List 14.3 Duplex Base Unit

Item	Part Name	Part Number
1	Rear Cover	—
2	Wire Harness Assembly	—
3	PWB Assembly	—
4	Gear 22T	—
5	Bushing	—
6	Positioning Shaft	—
7	Guide Part	—
8	Roller	—
9	Torsion Spring	—
10	Actuator	—
11	Wire Harness Assembly	—
12	Photo Interrupter ¹	—
13	Earth Ground	—
14	Wire Harness Assembly	—
15	Compressing Spring	—
16	Screw	—
17	Lever	—
18	Right Cover	—
19	Rubber Foot	—
20	Front Cover	—
21	Guide	—
22	Guide Plate	—
23	Left Cover	—
24	Lever	—
25	Guide	—
26	Guide	—
27	Guide	—
28	Pressure Spring	—
29	Roll	—
30	Shaft	—
31	Spacer	—

1. Included in Hardware Kit, see page 9-54.

500-Sheet Tray Option

Part List 15.1 500-Sheet Tray (1/2)

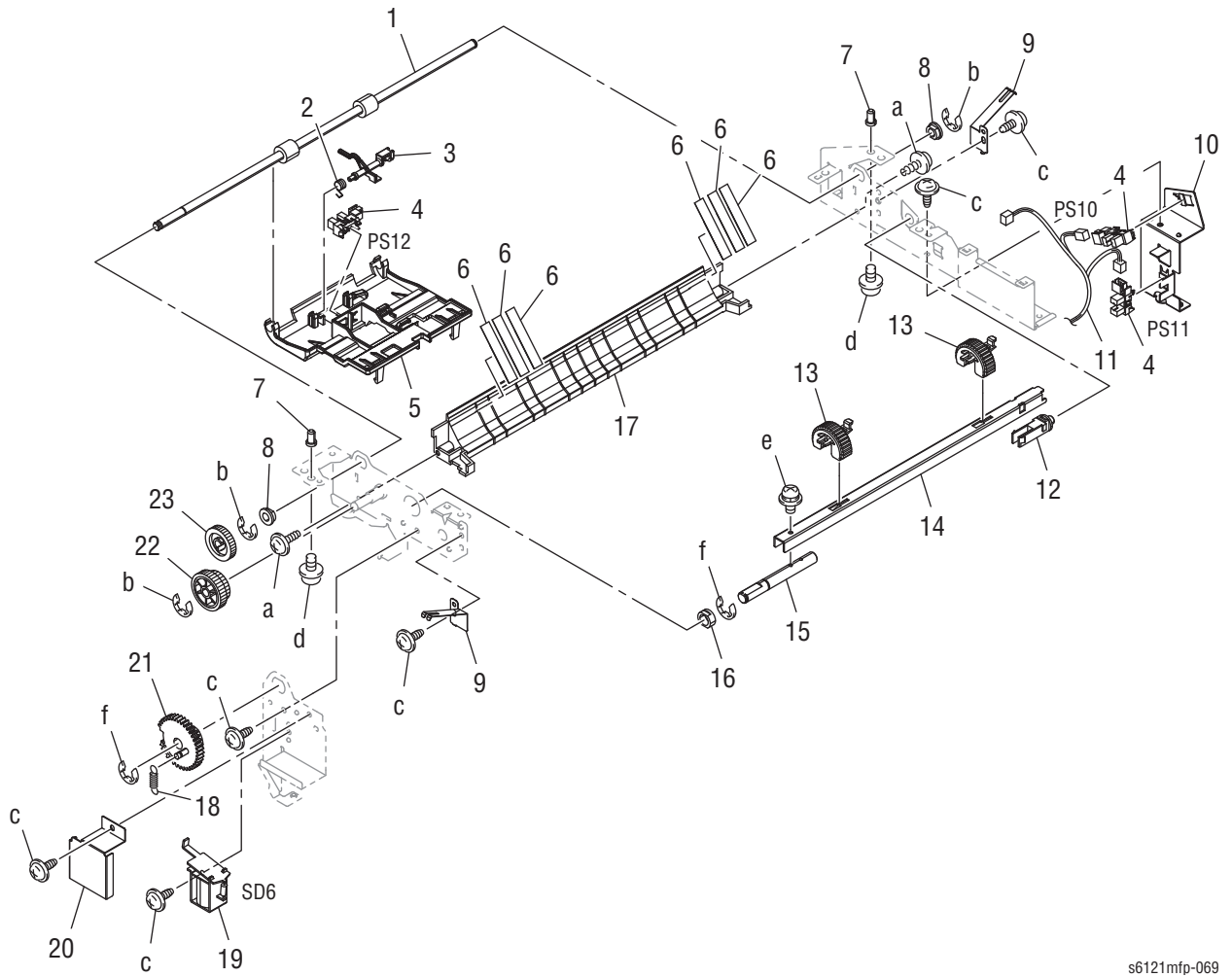


s6121mfp-068

Part List 15.1 500-Sheet Tray (1/2)

Item	Part Name	Part Number
	500 Sheet Tray (A4)	050E29010
	500 Sheet Tray (Letter)	050E29020
1	Rear Cover	—
2	Wire Harness Assembly	—
3	PWB Assembly	—
4	Guide	—
5	Wire Harness Assembly	—
6	Actuator	—
7	Compressing Spring	—
8	Screw	—
9	Lever	—
10	Right Cover	—
11	Front Cover	—
12	Rubber Foot	—
13	Reinforce Plate	—
14	Guide	—
15	Guide Plate	—
16	Left Cover	—
17	Lever	—
18	Pressure Spring	—
19	Roll	—
20	Shaft	—
21	Spacer	—

Part List 15.2 500-Sheet Tray (2/2)

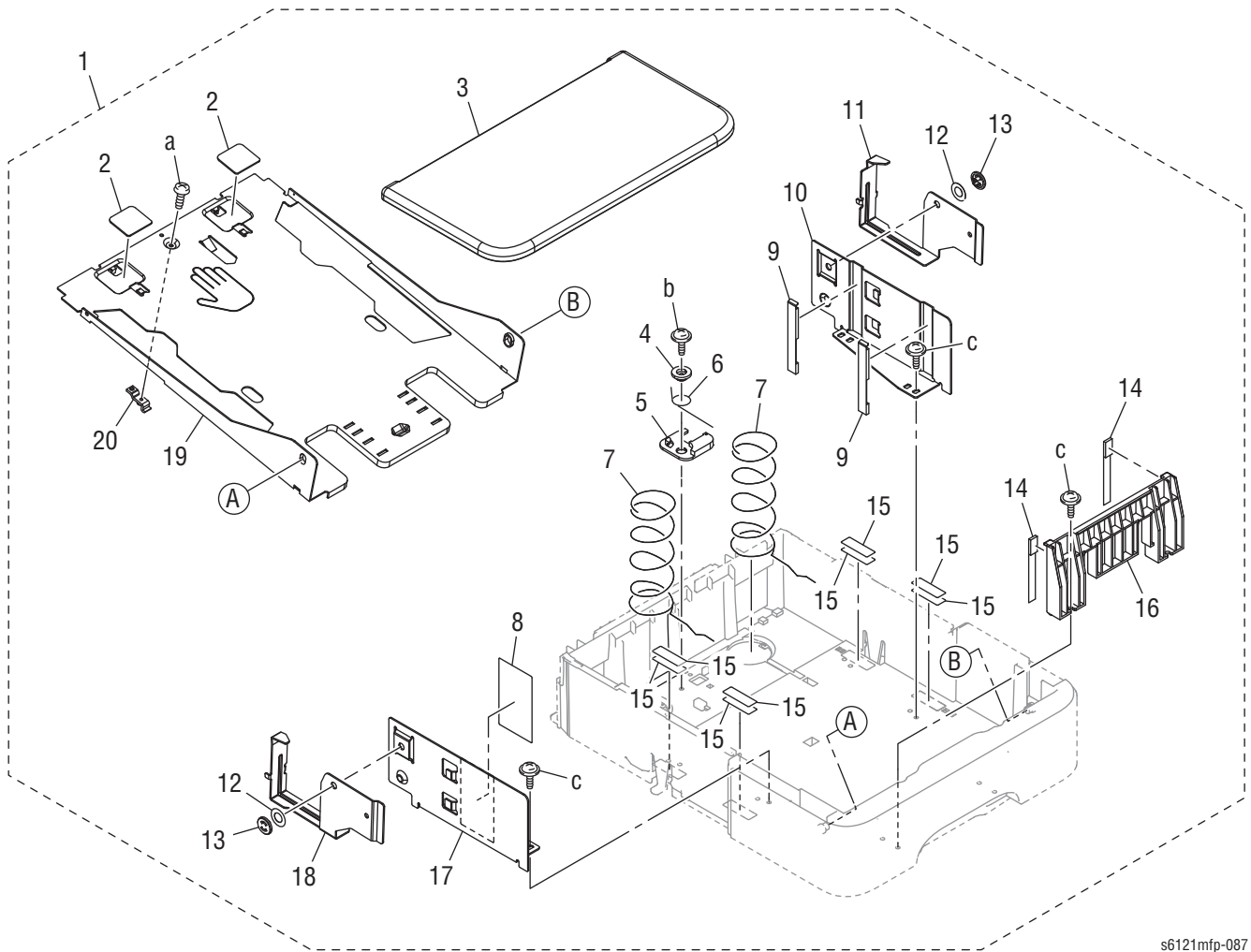


s6121mfp-069

Part List 15.2 500-Sheet Tray (2/2)

Item	Part Name	Part Number
1	Roller	—
2	Torsion Spring	—
3	Actuator	—
4	Transport Sensor	130E18330
5	Guide Part	—
6	Guide	—
7	Positioning Shaft	—
8	Bushing	—
9	Earth Ground	—
10	Mounting Plate	—
11	Wire Harness Assembly	—
12	Shaft	—
1	Roller	—
14	Bracket	—
15	Shaft	—
16	Bushing	—
17	Guide	—
18	Tension Spring	—
19	Solenoid	—
20	Cover	—
21	Gear 38T	—
22	Gear 20/26T	—
23	Gear 22T	—

Part List 15.3 500-Sheet Feeder Tray



s6121mfp-087

Part List 15.3 500-Sheet Feeder Tray

Item	Part Name	Part Number
1	Cassette Assembly	—
2	Friction Plate	—
3	Cover	—
4	Collar	—
5	Cam	—
6	Torsion Spring	—
7	Pressure Spring	—
8	Label	—
9	Cushion	—
10	Regulating Plate	—
11	Separator	—
12	Washer	—
13	Pin	—
14	Cushion	—
15	Spacer	—
16	Regulating Plate, Rear	—
17	Regulating Spring	—
18	Separator	—
19	Lifting Plate	—
20	Lock Lever	—

Xerox Supplies and Accessories

Consumable and Maintenance Items

Description	Part Number
Toner Cartridge US/EU 2.5K (K)	106R01469
Toner Cartridge DMO 1.0K (K)	106R01476
Toner Cartridge US/EU 2.5K (C)	106R01466
Toner Cartridge DMO 2.5K (C)	106R01473
Toner Cartridge US/EU 2.5K (M)	106R01467
Toner Cartridge DMO 2.5K (M)	106R01474
Toner Cartridge US/EU 2.5K (Y)	106R01468
Toner Cartridge DMO 2.5K (Y)	106R01475

Customer-replaceable Service Items

Parts List Reference	Description	Part Number
PL11.0.18	Fuser 120V	126E02770
PL11.0.18	Fuser 220V	126E02780
PL4.0.13	Imaging Unit	108R00868
604K61470	Transfer Roller Kit	604K61470

Service Kits

Service Kits provide spare parts normally associated with larger assemblies.

Hardware Kit

Hardware Kit

Description	Part Number
Hardware Kit	604K61500
Lever	011E25460
Torsion, Coil Spring	809E95490
Cup-head Tapping Screw SC tight, 8mm	826E54950
Pan-head Screw, 6mm	826E54960
Cup-head Tapping Screw SC tight round shape, 6mm	826E54970
Cup-head Tapping Screw SC tight, 10mm	826E54980
Pulling, Coil Spring	809E95500
Bearing	013E42740
Pulling, Coil Spring	809E95510

Hardware Kit (continued)

Description	Part Number
Time Belt	023E31770
Roll	059E11010
Bushing	016E20260
E-ring	115E13090
Pin	115E13100
Guide	032E40590
Spacer	014E68450
Time Belt	023E31780
Compression, Coil Spring	809E95520
Bushing	016E20270
E-ring	115E13110
Spring, Contact	115E13120
Photo Interrupt Sensor	130E18330

Wiring Kit

The wiring kit contains the following components.

Wiring Kit, Part Number 604K61510

Part List	Item Number(s)
PL4.0	13
PL6.0	15
PL8.0	20
PL9.1	16
PL10.0	21
PL12.0	15
PL13.0	13, 15, 16

